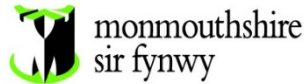


Public Document Pack



Neuadd y Sir
Y Rhadyr
Brynbuga
NP15 1GA

County Hall
Rhadyr
Usk
NP15 1GA

Thursday, 14 March 2019

Notice of Reports Received following Publication of Agenda.

Children and Young People Select Committee

Friday, 22nd March, 2019 at 10.00 am,
Council Chamber, County Hall, The Rhadyr USK - County Hall, The Rhadyr, Usk

Attached are reports that the committee will consider as part of the original agenda but were submitted to democratic services following publication of the agenda.

Item No	Item	Pages
3.	Schools Admission Policy and School Catchment Areas: To seek the views of scrutiny as part of the consultation on the proposed changes.	1 - 68
4.	To discuss future options for Mounton House Special School	69 - 114

Paul Matthews
Chief Executive

This page is intentionally left blank



monmouthshire
sir fynwy

CONSULTATION DOCUMENT

Review of Secondary School catchment
areas in Monmouthshire

Consultation period:

18th January 2019 to 1st March 2019

Contents

1. Introduction	3
2. Your views matter	3
3. Consultation requirements	4
4. Consultation with children and young people	4
5. Consultation arrangements - Key Dates	4
6. How will your views be considered	5
7. Background to the review of school catchment areas	5
8. Current provision across Monmouthshire	6
9. Why do we have School Catchment Areas?	7
10. Aims of the catchment area review	7
11. Transitional Arrangements	8
12. Secondary School Catchments - Identified issues	8
13. Areas considered under this review	9
14. Finance	9
Appendix 1 - Map showing Secondary School Catchment Areas	10
Appendix 2 - List of Primary Schools	10
Appendix 3 - List of Consultees	12

1. Introduction

This consultation document is an opportunity for consultees and other interested parties to learn about some proposed changes to secondary school catchment areas within the County of Monmouthshire. The proposed changes form part of the review of the School admission arrangements that are proposed to be implemented for the 2020/21 academic year.

The consultation provides you with an opportunity to ask questions, make comments, and share your views on the proposals put forward. Your input into this consultation will be considered carefully when the Council considers whether the proposals should be taken forward to implementation.

Please note that the information contained within this document should be considered in conjunction with the draft school admission policy 2020/21, which is available to view / download at www.monmouthshire.gov.uk/applying-for-a-school-place

2. Your views matter

Your views on the proposed changes to secondary school catchment areas are important to us. We really do want you to engage in this consultation and tell us what you think of the proposals, particularly if they may affect you or your children.

Important: This consultation will not make any assumptions, so whether you are for or against the proposed changes, please take this opportunity to have your say

You can tell us what you think by:

- 1) Attending one of the consultation sessions:

Review Area	Date	Venue
Goytre and surrounding areas	5 th February 2019 at 6pm	Goytre Fawr Primary School
Trellech and surrounding area	12 th February 2019 at 6pm	Trellech Primary School
Llandogo and surrounding area	18 th February 2019 at 6pm	Llandogo Primary School
Usk and surrounding area	20 th February 2019 at 6pm	Usk Church in Wales Primary School
All areas day time drop in session	14 th February 2019 9.30am to 11.30am	County Hall, Usk

- 2) To enable us to carry out detailed analysis of the feedback provided we would urge you to complete the consultation questionnaire, which is available on our website at www.monmouthshire.gov.uk/catchmentconsultation

If you have any questions on the proposals please contact the Access Unit on 01633 644508 or by emailing accesstolearning@monmouthshire.gov.uk.

Please note that the deadline for responses to this consultation is 1st March 2019 at 5pm. Any responses received by the local authority after this closing date will not be considered as part of this consultation.

3. Consultation requirements

The School Admissions Code Wales (July 2013), Local Authorities must consult on the admission arrangements for those schools for which it is the admissions authority. Where changes to existing arrangements are proposed, including school catchment areas, consultation must be undertaken with those likely to be affected by the proposals.

The Council is required to undertake this consultation by 1st March 2019 and determine the outcome of the proposals by 15th April 2019 should it wish to implement the proposals for September 2020 onwards.

4. Consultation with children and young people

The views of children and young people are extremely important to the Council and therefore children and young people will be provided with opportunities to contribute to this consultation process. The Council will engage with children and young people considered to be affected by these proposals and ensure that their views are captured and considered in any reports that determine our way forward.

5. Consultation arrangements - Key Dates

Consultation stage	
Task	Key Dates
Consultation commences	18 th January 2019
Consultation ends (6 weeks)	1 st March 2019

Consideration stage	
Task	Key Dates
Consultation report published by	27 th March 2019
Cabinet consider results of consultation and agree on how to proceed	3 rd April 2019

Implementation stage
September 2020

6. How will your views be considered

The Council will develop a consultation report incorporating all of the responses received from consultees by the consultation closing date. The consultation report will be made available for all consultees to view.

It is this consultation report that will be considered by the County Council's Cabinet informing a decision on whether any of the proposals should be implemented. So if you have a view, whether you support the proposals or not, please share them with us prior to the closing date.

Alongside your views, the Cabinet will consider the financial implications of the proposals prior to making a decision on whether they should be implemented. However, at this stage of the consultation we want to know what you think.

7. Background to the review of school catchment areas

The majority of catchment areas within Monmouthshire have been in place in their current form since the reorganisation of local government in 1996, and it is thought that they have been in place for many years prior to this. In many cases the catchment areas do not seem to follow a specific rationale, they are not in all cases based on nearest school and they do not in all cases follow transition arrangements. Some primary school catchment areas also show trends of regular overpopulation.

A review of School Catchment Areas was last undertaken in 2015. The local authority entered into a formal consultation to seek views on the proposed changes to secondary school catchment areas, however, the significance of the proposed

changes led to a Cabinet decision to re-engage in a more intensive consultation with the Monmouthshire community prior to implementing any changes.

In February 2018, the Council adopted a new corporate plan that sets out the 22 priorities to be completed by 2022. A review of school catchment areas has been identified within the corporate plan as one of the priorities to be revisited.

This consultation document starts this review with a particular focus on Secondary School catchment areas, with a review of Primary School catchment areas to follow.

8. Current provision across Monmouthshire

Secondary Schools

The County of Monmouthshire is geographically comprised of four in county Secondary School catchment areas serving in the region of 4644 children and young people from years 7 to 13. Our Secondary school estate consists of:

- King Henry VIII Comprehensive School in the Northwest
- Monmouth Comprehensive School in the Northeast
- Chepstow School in the East
- Caldicot School in the Southeast

Some areas of Monmouthshire also fall within a catchment area for a school that falls outside of the County border:

- Caerleon Comprehensive School in the Southwest

A map detailing the Secondary School catchment areas can be found under appendix 1.

Primary Schools

The Primary School estate is comprised of 30 Primary Schools supporting around 6315 children and young people. The structure of our Primary school estate includes:

- Two Welsh Medium Primary Schools, one located in the North and one located in the South of the County.
- Two Voluntary Aided Roman Catholic Primary Schools, one located in the North and one located in the South of the County.
- Two Voluntary Aided Church in Wales Primary Schools, both located in the South of the County.
- Four Voluntary Controlled Church in Wales Primary schools, three located in the North of the County and 1 located in central Monmouthshire.

A full list of Monmouthshire Primary Schools can be found under appendix 2

Each of the above Primary Schools offers its own designated catchment area, with the exception of our two Roman Catholic Primary Schools. It is understood that St Marys VA RC Primary serves the South of the County, whilst Our Lady and St Michaels RC Primary School serves the North of the County. However, these arrangements are not formally supported through designated catchment areas.

9. Why do we have School Catchment Areas?

The catchment area of a school is significant for the following reasons:

- School catchment areas are in place to help support the assessment and determination of school places. Children and Young People that reside within the catchment area for a designated school currently receive a priority for school places in the event that the preferred school is oversubscribed.
- Whilst parents are not obliged to apply for their children to attend their designated catchment school, having catchment areas is useful as a guide for parents to understand which school generally serves their immediate community.
- Catchment areas play a key part in ensuring adequate provision of school places within a designated area.
- Catchment areas are linked to the entitlement to free home to school transport in line with the County Council's current Home to School Transport Policy. If a pupil attends their catchment on nearest available school and lives over 2 miles from that school (Secondary) or 1.5 miles (Primary), they are entitled to free transport.

Under the Learner Travel (Wales) Measure 2008 Local Authorities have a Statutory Duty to provide transport to the nearest suitable school, if over 2 miles for primary and 3 miles for Secondary.

10. Aims of the catchment area review

The majority of catchment areas across the county have been in place for a significant amount of time and lack rationale and reasoning. The review thus far has identified the following overarching aims when reviewing primary and secondary school catchment areas:

- To address the current position whereby some areas of the County do not fall within the catchment area for a Monmouthshire school.

- Where possible, to align Primary and Secondary School catchment areas to support transitional arrangements.
- Where possible, to address areas whereby the catchment school is not necessarily the nearest school.
- To seek to address any imbalances within existing school catchment areas to ensure robust arrangements for the planning for school places.
- To review school catchment areas through the ongoing development of school reorganisation proposals.

Whilst the above form the council's overarching aims for this catchment area review, it's recognised that they cannot be applied in all cases due to the geography and rurality of our County.

11. Transitional Arrangements

Section 198 of the Education Act 2002 imposes a requirement upon the Governing Bodies of maintained Secondary schools and Primary schools to collaboratively draw up Transition Plans. A Primary school is only formally linked to the Secondary school that receives the majority of its year 6 leavers.

There are certain points of transition when the learning progress of pupils is more likely to dip. Transition from the Primary to the Secondary phase in school is a particularly vulnerable stage. For many young people, the move often leads to a downturn in achievement. As part of the effort to help smooth this transition, strong partnerships have been developed between Secondary schools and their feeder cluster Primary schools

12. Secondary School Catchments - Identified issues

A review of secondary school catchment areas has been agreed to be the Council's first stage of a countywide review of school catchment areas that will take place between now and 2022. In line with our overarching aims that underpin this review, our secondary school catchment areas present the following challenges:

- Some areas within the Monmouthshire County do not fall within the catchment area for one of our four secondary schools.
- There are Primary School catchment areas that do not align in their entirety with the catchment area for the feeding secondary school.
- Some areas have been identified as being within a Secondary School catchment area which is not their closest Monmouthshire School.

At this stage of the review, the Council has identified four main areas of the County to be reviewed as part of this consultation, and now seeks your input on some of the suggestions that have been put forward.

As a reminder, this consultation is the start of the ongoing review of school catchment areas. The Council will further engage with identified areas as it seeks to bring forward further proposals.

13. Areas considered under this review

Review area 1 – Village of Goytre and immediate surrounding areas

Review area 2 – Town of Usk and immediate surrounding areas

Review area 3 – Village of Trellech and immediate surrounding areas

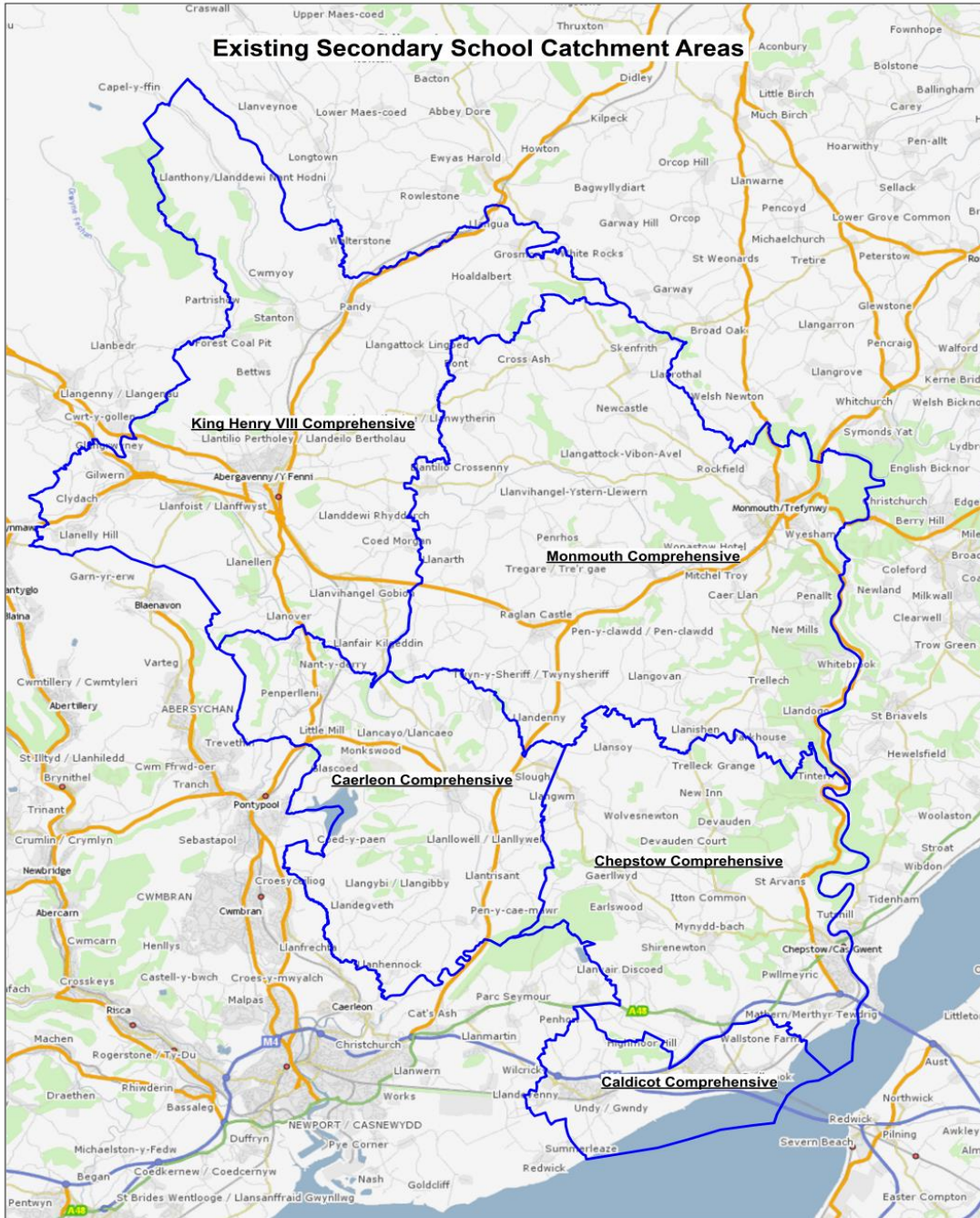
Review area 4 – Village of Llandogo and immediate surrounding areas

14. Finance

The aims of this stage of the catchment area review are not financially driven. However, a full cost analysis looking at the financial impacts of each proposal will be undertaken alongside this consultation, paying particular attention to the impact on the Monmouthshire schools affected by these proposals, as well as the impact on home to school transport costs.

A full cost analysis will be presented to the Council's Cabinet alongside the views received as part of this consultation, to determine whether or not proposals should be implemented.

Appendix 1 - Map showing Secondary School Catchment Areas



Appendix 2 - List of Primary Schools

CLUSTER	SCHOOL
Caldicot	Archbishop Rowan Williams CIW Primary
Caldicot	Castle Park Primary
Abergavenny	Cantref Primary
Monmouth	Cross Ash Primary
Abergavenny	Deri View Primary
Caldicot	Dewstow Primary
Caldicot	Durand Primary
Abergavenny	Gilwern Primary
Abergavenny	Goytre Fawr Primary
Monmouth	Kymin View Primary
Monmouth	Llandogo Primary
Abergavenny	Llanfoist Fawr Primary
Abergavenny	Llantilio Pertholey CIW Primary
Abergavenny	Llanvihangel Crucorney Primary
Caldicot	Magor CIW Primary
Monmouth	Osbaston CIW School
Abergavenny	Our Lady & St Michaels RC Primary
Monmouth	Overmonnow Primary
Chepstow	Pembroke Primary
Monmouth	Raglan CIW VC Primary
Caldicot	Rogiet Primary
Chepstow	Shirenewton Primary
Chepstow	St Mary's RC Primary
Chepstow	The Dell Primary
Chepstow	Thornwell Primary
Monmouth	Trellech Primary
Caldicot	Undy Primary
Monmouth	Usk CIW Primary
Abergavenny	Ysgol Gymraeg Y Fenni
Caldicot	Ysgol Gymraeg Y Ffin

Appendix 3 - List of Consultees

The governing body of the relevant schools

- Governing bodies of All secondary schools in Monmouthshire
 - Caldicot School
 - Chepstow School
 - King Henry VIII Comprehensive School
 - Monmouth Comprehensive School
- Governing bodies of any other secondary schools affected by the proposals:
 - Caerleon Comprehensive School
- Governing bodies of Primary Schools affected by the proposals:
 - Llandogo Primary School
 - Trellech Primary School
 - Goytre Fawr Primary School
 - Usk Church in Wales Primary School

Neighbouring Local Authorities affected by the proposals

- Newport City Council
- Gloucestershire County Council
- Herefordshire County Council

Parents of Children Likely to be affected

- Monmouthshire Parents of pupils living in the affected areas with children on roll in Nursery to Year 5

Other key parties

- Members of the School Admission Forum
- County Councillors
- Ward Members for the affected areas



CONSULTATION DOCUMENT

Review of School Admission Arrangements
for Academic year 2020/21

Consultation period:

18th January 2019 to 1st March 2019

Contents

1. Introduction	3
2. Your views matter	3
3. Consultation requirements	4
4. Consultation with children and young people	4
5. Consultation arrangements - Key Dates	5
6. How will your views be considered	5
7. Explanation of terms used in this document	6
8. The role of Monmouthshire County Council as an admissions authority	6
9. Background to the review of the school admissions policy	7
10. What areas of the policy are we looking to review?	7
11. Oversubscription Criteria - the Status Quo	8
12. Proposed changes to the oversubscription criteria	8
13. Proposed oversubscription criteria - Primary Schools	9
14. Proposed oversubscription criteria - Secondary Schools	10
15. Background to proposed changes.....	11
16. Advantages and disadvantages of the proposals	12
Appendix 1 - List of Schools in Monmouthshire	14
Appendix 2 - List of Consultees	15

1. Introduction

This consultation document is an opportunity for consultees and other interested parties to learn about some proposed changes to the school admission arrangements for secondary and community schools within the County of Monmouthshire. We proposed to implement the changes to existing arrangements in readiness for the 2020/21 academic year.

The consultation provides you with an opportunity to ask questions, make comments, and share your views on the proposals put forward. Your input into this consultation will be considered carefully when the Council considers whether the proposals should be taken forward to implementation.

Please note that the information contained within this document should be considered in conjunction with the draft school admission policy 2020/21, which is available to view / download at

www.monmouthshire.gov.uk/applying-for-a-school-place

2. Your views matter

Your views on the proposed changes to the school admission arrangements are important to us. We really do want you to engage in this consultation and tell us what you think of the proposals, particularly if they may affect you or your children.

Important: This consultation will not make any assumptions, so whether you are for or against the proposed changes, please take this opportunity to have your say

You can tell us what you think by:

- 1) Attending one of the consultation sessions:

Review Area	Date	Venue
Caldicot Cluster	7 th February 2019 at 6pm	Durand Primary School
Chepstow Cluster	14 th February 2019 at 6pm	Chepstow School
Abergavenny Cluster	11 th February 2019 at 6pm	Cantref Primary School
Monmouth Cluster	21 st February 2019 at 6pm	Overmonnow Primary School
All areas day time drop in session	6 th February 2019 9.30am to 11.30am	Innovation House, Magor
	22 nd February 2019 9.30am to 11.30am	County Hall, Usk

- 2) To enable us to carry out detailed analysis of the feedback provided we would urge you to complete the consultation questionnaire, which is available on our website at www.monmouthshire.gov.uk/admissionconsultation

If you have any questions on the proposals please contact the Access Unit on 01633 644508 or by emailing acesstolearning@monmouthshire.gov.uk.

Please note that the deadline for responses to this consultation is 1st March 2019 at 5pm. Any responses received by the local authority after this closing date will not be considered as part of this consultation.

3. Consultation requirements

The School Admissions Code Wales (July 2013), Local Authorities must consult annually on the admission arrangements for those schools for which it is the admissions authority. Where changes to existing arrangements are proposed, including school catchment areas, consultation must be undertaken with those likely to be affected by the proposals.

The Council is required to undertake this consultation by 1st March 2019 and determine the outcome of the proposals by 15th April 2019 should it wish to implement the proposals for September 2020 onwards.

4. Consultation with children and young people

The views of children and young people are extremely important to the Council and therefore children and young people will be provided with opportunities to contribute to this consultation process. The Council will engage with children and young people considered to be affected by these proposals and ensure that their views are captured and considered in any reports that determine our way forward.

5. Consultation arrangements - Key Dates

Consultation stage	
Task	Key Dates
Consultation commences	18 th January 2019
Consultation ends (6 weeks)	1 st March 2019

Consideration stage	
Task	Key Dates
Consultation report published by	27 th March 2019
Cabinet consider results of consultation and agree on how to proceed	3 rd April 2019

Implementation stage
September 2020

6. How will your views be considered

The Council will develop a consultation report incorporating all of the responses received from consultees by the consultation closing date. The consultation report will be made available for all consultees to view.

It is this consultation report that will be considered by the County Council's Cabinet informing a decision on whether any of the proposals should be implemented. Therefore, if you have a view, whether you support the proposals or not, please share them with us prior to the closing date.

7. Explanation of terms used in this document

Term	Explanation
Admission Authority	The body responsible for setting and applying the admission arrangements for the school concerned. The Council is responsible for the admission arrangements for Community Schools within the County
Community Schools	A maintained Nursery, Primary or Secondary School setting for which the Local Authority has staffing, premises and admissions responsibility
Oversubscription criteria	A list of criteria used to determine which applicants are to be awarded school places in the event that there are more application requests for a school than there are places available
Academic year	The period of the year in which children and young people start / attend school. The Academic year runs from the beginning of September through to 31 st August in the following calendar year
Published Admission Number (PAN)	The maximum number of children that the Council will admit into each year group in a school. This number reflects the total capacity of the school
Feeder School	One of a group of primary schools that work in close partnership with a local secondary school, often sharing educational arrangements in readiness for transition between schools

8. The role of Monmouthshire County Council as an admissions authority

An admission authority is a body responsible for setting and applying a school's admission arrangements. Local Authorities in most instances are the admission authorities for community and voluntary controlled schools. Governing bodies are the admission authorities for voluntary aided and foundation schools.

The County of Monmouthshire is comprised of 30 Primary Schools, 4 Secondary schools and a special school. A full list of Monmouthshire schools can be found under appendix 1

In Monmouthshire, the Council is the admission authority for 31 of the 35 schools within the county. The individual governing bodies are the admission authorities for:

Archbishop Rowan Williams VA Church in Wales Primary
Magor VA Church in Wales Primary
Our Lady and St Michaels RC Primary
St Marys RC Primary

The Council is the admission authority for all other nursery, primary and secondary schools within the county.

In line with the School Admissions code of practice (2013), parents must complete an application form in order to obtain a nursery / school place. Parents / carers will have the opportunity to complete an application online or alternatively via a paper application.

All parents are invited to express a preference on a common application form, regardless of the status of the schools for which they wish to apply and whether the school is in/out of county. The Council has a responsibility to consider all preferences equally and comply with the preference wherever possible. All applications must be determined in line with the outcome of the application in line with its agreed school admissions policy.

In the event that the number of application requests exceeds the number of available places, the agreed oversubscription criteria is used to award the available school places. Any applicant unsuccessful in obtaining a place at the preferred school will receive a statutory right to appeal against the decision to an independent appeal panel.

9. Background to the review of the school admissions policy

The adopted oversubscription criteria that forms part of the school admissions policy has been in place for many years. The Council has previously been challenged on the fairness of the current oversubscription criteria and how school places are awarded.

A review of oversubscription criteria was last undertaken in 2015, where the Council entered into a formal consultation seeking views on a proposal to amend the order of the oversubscription criteria. A particular focus was placed on the positioning of those residing within the catchment area for the preferred school against those with relevant siblings. However, the significance of the proposed changes led to a Cabinet decision to re-engage in a more intensive consultation with the Monmouthshire community prior to implementing any changes.

In February 2018, the Council adopted a new corporate plan that sets out the 22 priorities to be completed by 2022. A review of the school admissions policy has been identified within the corporate plan as one of the priorities to be revisited.

10. What areas of the policy are we looking to review?

The Council is seeking to engage with consultees specifically on the oversubscription criteria e.g. the criteria used to determine which applicants are to be awarded places in the event that there are more application requests for a preferred school than there are places available.

11. Oversubscription Criteria - the Status Quo

The Council consults on its admission policy on an annual basis. The adopted oversubscription criteria in its current form for community and voluntary controlled schools in Monmouthshire is:

Children and Young People in receipt of a statement of Special Educational Needs (Statutory requirement for admission)
1. Looked After Children or previously Looked After Children. i.e. children who are in the care - or have previously been in the care of the Local Authority
2. Children with exceptional medical circumstances
3. Children with relevant siblings who are in attendance at the preferred School
4. Children residing within the preferred school's catchment area
5. Children residing outside of the catchment area
6. After applying the categories above, or should the school continue to be in a position of over-subscription in any of the above categories, priority will be based on closeness to the preferred school, measured using the shortest safe walking route.

Please refer to the full admission policy 2020/21 available via www.monmouthshire.gov.uk/applying-for-a-school-place for a full description of how children and young people qualify under each criteria above.

12. Proposed changes to the oversubscription criteria

The Council are consulting with you on the oversubscription criteria. This is a criteria used to award places in the event that there are more application requests for a preferred school than there are places available.

In particular, the Council are considering three key changes to the existing criteria

Proposal 1 - Introduce a new criteria into the oversubscription criteria for secondary schools that affords a priority for children on roll at a designated Primary feeder school.

Proposal 2 - Affording priority to children and young people resident in the designated catchment area for the preferred school over those residing outside of the catchment area but with relevant siblings.

Important: The Council proposes that priority will continue to be afforded to out of catchment children with existing sibling links for a period of five years from the date of implementation of this policy (September 2020), over those children in catchment but without relevant sibling links. This criteria would be relevant for existing siblings only, placed on roll at the preferred school by September 2019, with younger siblings eligible to start Primary School (Reception) / transfer from Primary to Secondary school those children eligible to start Primary School / transfer to secondary school in September 2020, September 2021, September 2022, September 2023, and September 2024.

13. Proposed oversubscription criteria - Primary Schools

The Council would like to hear your views on the implementation of the below oversubscription criteria for community and voluntary controlled primary schools in Monmouthshire:

Priority rank	Criteria
<i>Children in receipt of a Statement of special educational needs (statutory requirement for admission)</i>	
1.	Looked after children or previously looked after children i.e. children that are in the care of or have previously been in the care of a local authority.
2.	Children with exceptional medical circumstances
3.	Children residing within the catchment area for the preferred school who have relevant siblings
4.	Children residing outside of the catchment area for the preferred school, but with relevant siblings who will continue to be in attendance at the preferred school due to being unsuccessful in their application for a place at their catchment school.
5.	Children residing outside of the catchment area, but with relevant existing siblings enrolled at the preferred school by September 2019. ***Please see explanatory note below
6.	Children residing inside the catchment area for the preferred school
7.	Children residing outside of the catchment area for the preferred school, with a relevant sibling (who will be in attendance at the preferred school at time of admission) that does not meet criteria points 4 and 5 above
8.	After applying the categories above, or should the school continue to be in a position of over-subscription in any of the above categories, priority will be based on

	closeness to the preferred school, measured using the shortest safe walking route.
--	--

*** This criteria would be relevant for existing siblings only, placed on roll at the preferred school by September 2019, with younger siblings eligible to start Primary School (Reception) in September 2020, September 2021, September 2022, September 2023, and September 2024.

Please refer to the full draft school admissions policy 2020/21 at www.monmouthshire.gov.uk/applying-for-a-school-place for details on how children qualify for each of the above criteria.

14. Proposed oversubscription criteria - Secondary Schools

The Council would like to hear your views on the implementation of the below oversubscription criteria for community secondary schools in Monmouthshire:

Priority rank	Criteria
<i>Children in receipt of a Statement of special educational needs (statutory requirement for admission)</i>	
1.	Looked after children or previously looked after children i.e. children that are in the care of or have previously been in the care of a local authority.
2.	Children with exceptional medical circumstances
3.	Children residing within the catchment area for the preferred school who have relevant siblings
4.	Children residing outside of the catchment area for the preferred school, but with relevant siblings who will continue to be in attendance at the preferred school due to being unsuccessful in their application for a place at their catchment school.
5.	Children residing outside of the catchment area, but with relevant older siblings enrolled at the preferred school by September 2019. ***Please see explanatory note below
6.	Children residing inside the catchment area for the preferred school
7.	Children residing outside of the catchment area for the preferred school, with a relevant sibling (who will be in attendance at the preferred school at the time of admission) and does not meet criteria points 4 and 5 above

8.	Children currently on roll at a primary school that is designated to be a feeder school for the preferred secondary school
9.	After applying the categories above, or should the school continue to be in a position of over-subscription in any of the above categories, priority will be based on closeness to the preferred school, measured using the shortest safe walking route.

*** This criteria would be relevant for existing siblings only, placed on roll at the preferred school by September 2019, with younger siblings eligible to transfer from primary to secondary school in September 2020, September 2021, September 2022, September 2023, and September 2024.

Please refer to the full draft school admissions policy 2020/21 at www.monmouthshire.gov.uk/applying-for-a-school-place for details on how children qualify for each of the above criteria.

15. Background to proposed changes

Proposal 1 - Introduce a new criteria into the oversubscription criteria for secondary schools that affords a priority for children on roll at a designated Primary feeder school.

The oversubscription criteria in its current form does not currently afford priority to children in attendance at a primary school considered as a feeder for the preferred secondary school.

Parents are invited to express a preference for a school for their child to attend. As a result, primary schools within the county often have children and young people on their roll that do not form part of their catchment area / the catchment area for the feeding secondary school.

Following the application of the priority criteria for children living within the catchment area for the preferred school, allocations are made based on the distance calculated from the home address to the preferred school. During times of oversubscription, some children in attendance at a feeder primary school are often unsuccessful in obtaining places at the feeding secondary school, resulting in them being unable to transition to secondary school alongside their peers.

The Council proposes the introduction of the feeder school criteria to respect the collaborative and transitional arrangements that exist between Monmouthshire primary and secondary schools, and increase the support for peer groups to remain together in their journey to secondary school.

Proposal 2 - Afford priority to children and young people resident in the designated catchment area for the preferred school over those residing outside of the catchment area but with relevant siblings.

The oversubscription criteria in its current form affords a priority to children with relevant siblings attending the preferred school, regardless of whether or not they reside within the catchment area for the preferred school.

Parents have the opportunity to express a preference to the primary school in which they wish their child to attend – this does not need to be the designated catchment school. In the event that their application is successful, the current oversubscription criteria offers a high priority to their siblings who follow into primary school in future years.

Whilst the Council recognises the importance of siblings being able to attend the same school, the current position results in many in catchment children being displaced and transported to primary schools outside of their community.

The Council is seeking your views on whether children residing within the catchment area for a preferred school should be afforded priority over those residing out of catchment but with relevant siblings.

16. Advantages and disadvantages of the proposals

Proposal 1 - Introduce a new criteria into the oversubscription criteria for secondary schools that affords a priority for children on roll at a designated Primary feeder school.

Advantages	Disadvantages
Children and young people that are attending a feeder school will have an increased opportunity of accessing school places at the feeding secondary school	Children and young people that are residing outside of the catchment area for the preferred school will have an increased risk of not obtaining a school place at the preferred school if they are not in attendance at a designated feeder primary school
The proposal will increase the opportunity of children and young people transitioning to the same secondary school alongside their peers.	
The proposal recognises the transitional arrangements between primary and secondary schools, and the associated educational benefits	

Proposal 2 - Afford priority to children and young people resident in the designated catchment area for the preferred school over those residing outside of the catchment area but with relevant siblings

Advantages	Disadvantages
<p>The proposals would increase the opportunities for children and young people residing within the preferred schools' designated catchment area to secure places at their designated catchment school(s).</p>	<p>The longer-term impact of this proposal could increase the risk of children and young people being unable to attend the same school as their sibling.</p> <p>Important – the above would at large relate to siblings enrolled at the preferred school after September 2019. Parents would be aware of the risks at point of application that applying for a school(s) outside of the catchment area could bring to younger siblings.</p>
<p>The proposals are supportive of children and young people having increased opportunities of attending a school within their community.</p>	
<p>Because of the above, there would be a reduction in the number of children and young people being transported to schools outside of their community.</p>	
<p>The majority of children and young people with existing sibling links would continue to receive a priority to attend the same school as their sibling(s). N.B. the existing sibling would need to be on roll at the preferred school by September 2019.</p>	

Appendix 1 - List of Schools in Monmouthshire

Primary Schools

CLUSTER	SCHOOL
Caldicot	Archbishop Rowan Williams CIW Primary
Caldicot	Castle Park Primary
Abergavenny	Cantref Primary
Monmouth	Cross Ash Primary
Abergavenny	Deri View Primary
Caldicot	Dewstow Primary
Caldicot	Durand Primary
Abergavenny	Gilwern Primary
Abergavenny	Goytre Fawr Primary
Monmouth	Kymin View Primary
Monmouth	Llandogo Primary
Abergavenny	Llanfoist Fawr Primary
Abergavenny	Llantilio Pertholey CIW Primary
Abergavenny	Llanvihangel Crucorney Primary
Caldicot	Magor CIW Primary
Monmouth	Osbaston CIW School
Abergavenny	Our Lady & St Michaels RC Primary
Monmouth	Overmonnow Primary
Chepstow	Pembroke Primary
Monmouth	Raglan CIW VC Primary
Caldicot	Rogiet Primary
Chepstow	Shirenewton Primary
Chesptow	St Mary's RC Primary
Chesptow	The Dell Primary
Chepstow	Thornwell Primary
Monmouth	Trellech Primary
Caldicot	Undy Primary
Monmouth	Usk CIW Primary
Abergavenny	Ysgol Gymraeg Y Fenni
Caldicot	Ysgol Gymraeg Y Ffin

Secondary Schools

CLUSTER	SCHOOL
Caldicot	Caldicot School
Chepstow	Chepstow School
Abergavenny	King Henry VIII Comprehensive School
Monmouth	Monmouth Comprehensive School
Serving all 4 clusters	Mounton House Special School

Appendix 2 - List of Consultees

The governing body of the relevant schools

1. Governing bodies of All secondary schools in Monmouthshire
 - Caldicot School
 - Chepstow School
 - King Henry VIII Comprehensive School
 - Monmouth Comprehensive School
2. Governing bodies of All primary schools in Monmouthshire:

Neighboring Local Authorities affected by the proposals

- Newport City Council
- Gloucestershire County Council
- Herefordshire County Council
- Torfaen County Council
- Powys County Council

Admission Authorities for all other maintained schools in the area

- Archbishop Rowan Williams CIW Primary
- St Marys RC Primary
- Our Lady and St Michaels RC Primary
- Magor CIW Primary

Parents of Children Likely to be affected

- All parents of children and young people currently attending a Monmouthshire Primary / Secondary School

Other key parties

- Members of the School Admission Forum
- County Councillors
- Church in Wales Diocesan trust, director of Education
- Roman Catholic Diocesan trust, director of Education

This page is intentionally left blank



**Review Area 1
Goytre Village & the Surrounding
Areas**

Consultation period:

18th January 2019 to 1st March 2019

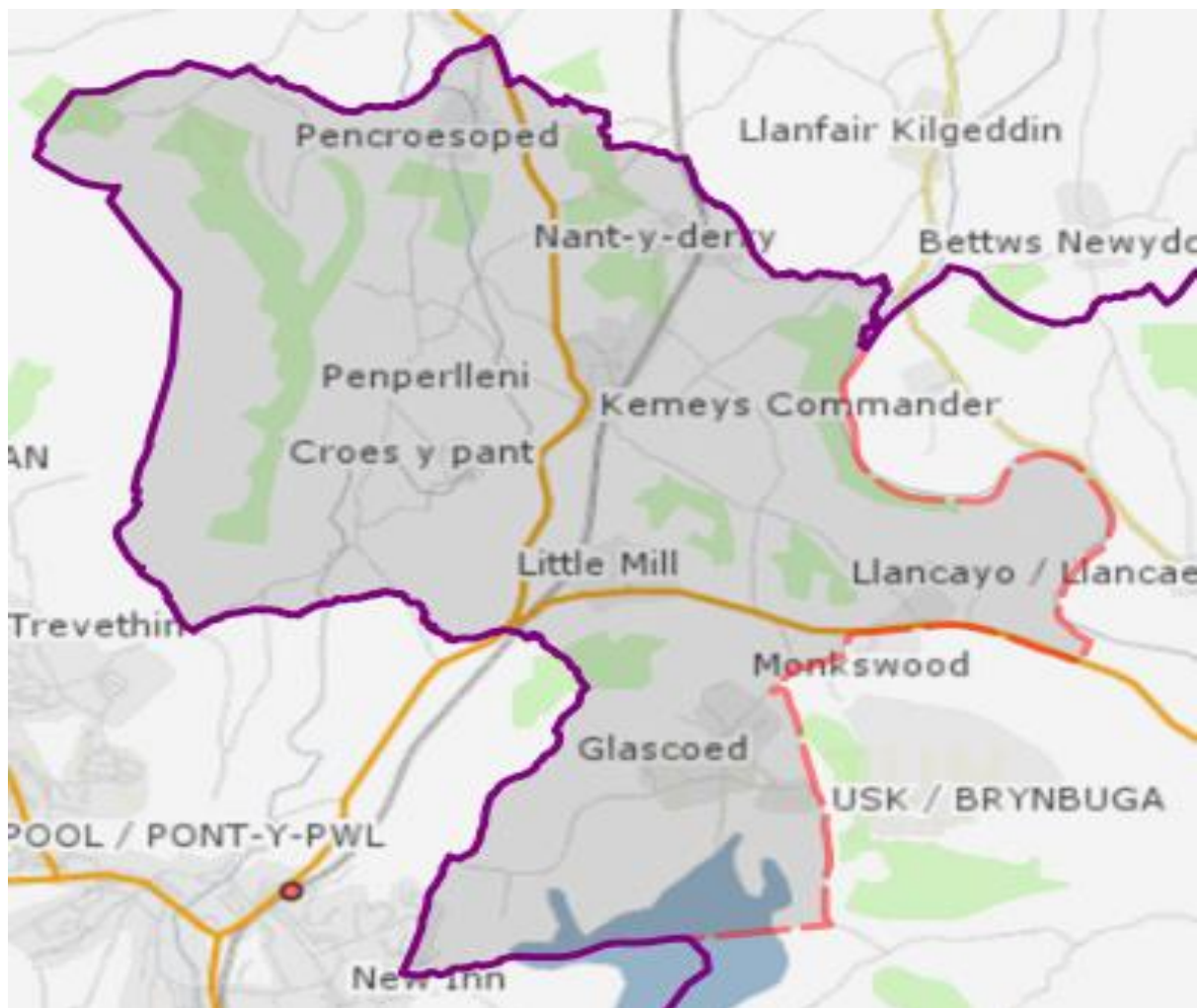
Contents

1. The Proposal.....	3
2. The current position	4
3. Why are we considering the proposed change?	6
4. Background information	7
5. Advantages and Disadvantages of the proposal	8
6. Financial Implications.....	9
7. What Next?	9

1. The Proposal

The Council are considering amending the secondary school catchment area for children and young people currently residing within the village of Goytre and the immediate surrounding areas. The main areas affected by this proposal are Goytre, Penperlleni, Nantyderry, Little Mill, Monkswood and Glascoed.

The areas identified currently form part of the catchment area for Goytre Fawr Primary School, and Caerleon Comprehensive School. The map below illustrates the areas that are being considered under this proposal, and will help you to understand whether you could be affected by the proposed changes



The Council would like to know your views on whether the secondary school catchment boundary should be amended for the specified areas (shaded area above), to form part of the catchment area for King Henry VIII Comprehensive School, thus enabling children and young people to continue their education through a Monmouthshire education system.

Alternatively, the Council would like to know your views on whether the status quo should continue, i.e. Caerleon Comprehensive School remaining as the designated catchment school for the affected area.

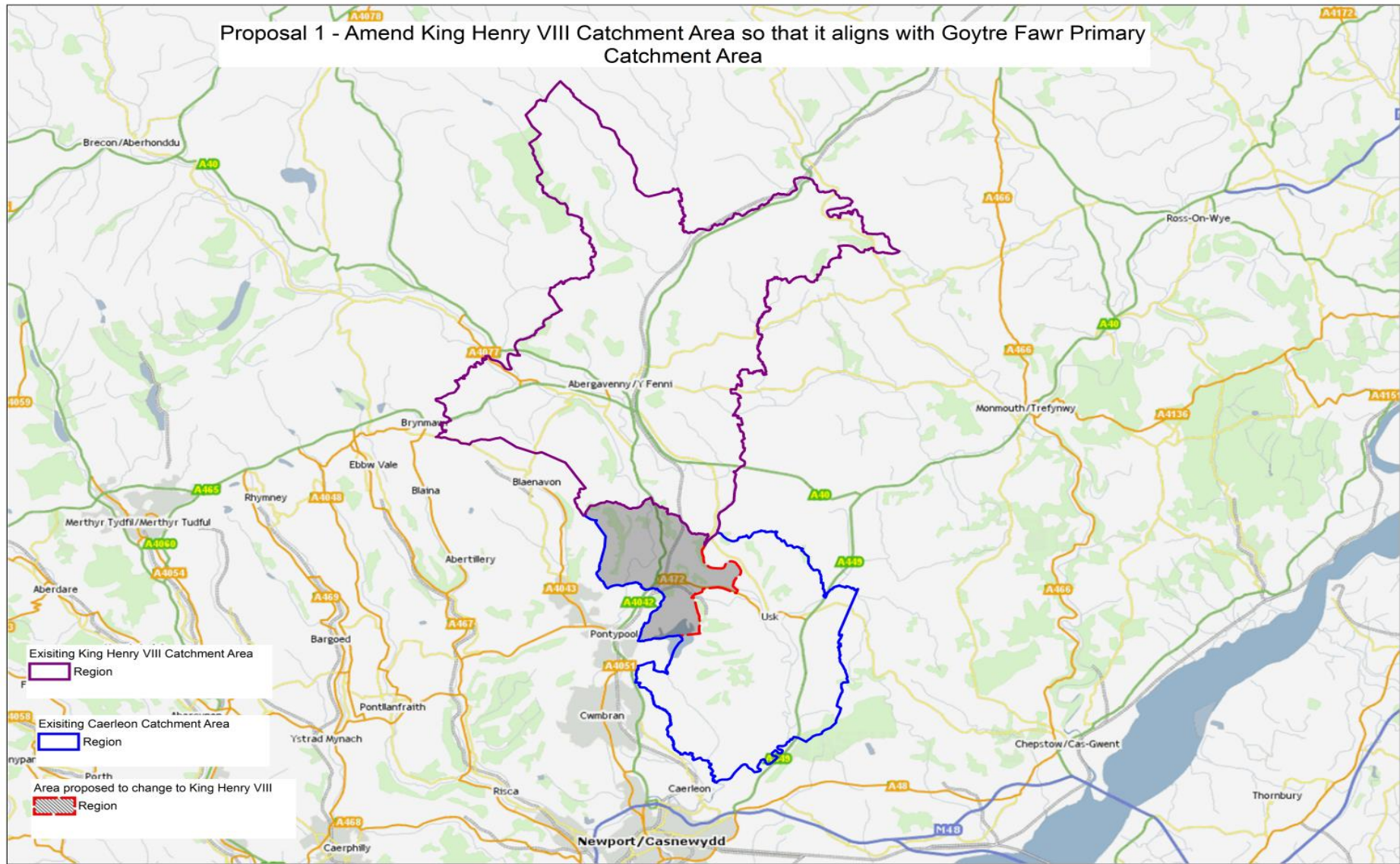
The proposals would see the provision of free home to school transport offered to King Henry VIII Comprehensive School as the newly designated catchment school. Only those currently residing in the affected areas and currently on roll at Caerleon Comprehensive would continue to receive home to school transport to Caerleon Comprehensive

2. The current position

The area under review forms part of the catchment area for Goytre Fawr Primary School. Goytre Fawr Primary School is located in the county of Monmouthshire and is considered as a designated feeder school for King Henry VIII Comprehensive School, however, its catchment area serves more than 1 secondary school:

- 1) **Caerleon Comprehensive School**. Situated in the City of Newport and forms the secondary catchment school for the majority of children and young people that reside within the Goytre Fawr Primary catchment area.
- 2) **King Henry VIII Comprehensive School**. Situated in Abergavenny, Monmouthshire and forms the secondary catchment school for a small number of children and young people that reside within the Goytre Fawr Primary catchment area. King Henry also forms the nearest Monmouthshire Secondary school for the majority of the affected area.
- 3) **West Monmouth School**. Situated in Pontypool, Torfaen, and forms the nearest school for the majority of children and young people that reside within the catchment area for Goytre Fawr Primary School.

The map overleaf illustrates the current position, identifying how the area under review relates to existing secondary school catchment areas. For clarity, the shaded area of this map currently forms part of the catchment area for Caerleon Comprehensive School, but is proposed to form part of King Henry VIII Comprehensive School.



3. Why are we considering the proposed change?

No designated secondary catchment school within Monmouthshire.

One of the identified aims of our catchment review was to consider the areas of Monmouthshire that do not currently have a designated Secondary catchment School that falls within Monmouthshire. The secondary catchment school is presently one that falls within the city of Newport, and is not one that is considered to be the nearest school. The proposed changes to the affected areas would allow children resident in Monmouthshire to access a secondary school that is within the county in which they live.

Transitional arrangements between Primary and Secondary School.

Goytre Fawr Primary School is the designated primary school for the affected area and is a feeder school for King Henry VIII Secondary School. The proposed changes would see complete alignment between the catchment area for Goytre Fawr Primary School and King Henry VIII Secondary school, lending support to the existing transitional arrangements, and enabling the cohorts of children to remain together when entering into that daunting transition between Primary to Secondary School.

Access to School places

The parents of children and young people currently residing within the affected area have the opportunity to express a preference for a school at which they wish for their child to attend. This preference does not need to be for the designated catchment school, however, children residing within the catchment area for a preferred school receive a priority in the event of oversubscription.

Those residing within the affected area are not afforded with the above priority for a Monmouthshire School as they do not have a designated secondary catchment school within the county in which they live. The proposals would address this matter.

Provision of Home to School Transport

A further consideration of the proposed change is the current provision for home to school transport that currently serves the affected area. The council's current policy provides free home to school transport to the nearest or catchment school if residing 2 miles or more from the home address.

The affected area sees home to school transport provision offered to multiple secondary schools for some of those children and young people residing in affected area, dependent on parental preference:

- **Caerleon Comprehensive School** as the designated catchment school for most of the affected areas, although not considered to be the nearest school.
- **West Monmouth School** as the nearest school for the majority of the affected area
- **King Henry VIII School** – discretionary transport on the basis of being the nearest Monmouthshire Secondary School serving parts of the affected area.

The offer of transport to multiple secondary schools is financially unsustainable and would be addressed through these proposals.

4. Background information

An analysis of parental requests made over the last 5 years show that the vast majority of children and young people attending Goytre Fawr Primary School opt to transition to either King Henry VIII or Caerleon Comprehensive Schools. The table below provides the numbers transitioning to each of the secondary schools from Goytre Fawr Primary over the last 5 years.

	Transition to King Henry VIII	Transition to Caerleon Comprehensive
September 2014	19	8
September 2015	9	9
September 2016	17	9
September 2017	18	4
September 2018	16	4
Total	79	34

The numbers in the above table are children and young people that have previously attended Goytre Fawr Primary School, and demonstrates that most seek admission into King Henry VIII Comprehensive School, which in the majority of cases is not the designated catchment school.

Projected Numbers on roll

The table below identifies the number of children that are currently residing within the affected area and therefore those most likely to be affected by the proposed change. The numbers identify the children that will transition from Primary to Secondary school between September 2020 and September 2025.

Current NCY	Primary to Secondary transition	Number of Pupils Affected
Year 5	Sep-20	29
Year 4	Sep-21	35
Year 3	Sep-22	18
Year 2	Sep-23	17
Year 1	Sep-24	28
Reception	Sep-25	18
	Total	145

The Council's projected numbers on roll for King Henry VIII Comprehensive school support that the above children could be accommodated should the proposals be supported and agreed.

Pupils currently on roll at Caerleon Comprehensive School.

Children and Young People who are currently on roll at Caerleon Comprehensive School will not be affected by these proposals and existing home to school transport arrangements will remain in place until they are no longer attending the school.

5. Advantages and Disadvantages of the proposal

Advantages	Disadvantages
The proposals are supporting Monmouthshire children attending Monmouthshire Schools	Families residing within the affected area would be removed from the catchment area for Caerleon Comprehensive should proposals be agreed.
Families residing within the affected area would have a designated catchment school within the county in which they live	Children and Young People from within the affected area can apply for a school place at Caerleon Comprehensive should they wish. However, there is an increased risk that their application will be unsuccessful as they would then be considered to be an out of catchment applicant.
School catchment areas form part of the oversubscription criteria used to award school places. Children and young people from the affected area would gain an advantage in obtaining a school place at a Monmouthshire school	Only children residing within the affected area that are already on roll at Caerleon Comprehensive School will continue to receive free home to school transport. Any new requests will not be entitled from September 2020.

should they form part of the catchment area.	
Children and young people residing within the affected area would meet the criteria to receive free home to school transport to a Monmouthshire School.	Some parts of the affected area are slightly closer in distance to Caerleon Comprehensive than King Henry Comprehensive. Therefore, travel distances for some may increase.
The number of schools to which the council currently provides free home to school transport would reduce	
Enabling the above would support the robust transition links between Goytre Fawr Primary and King Henry VIII, enabling peer groups to remain together on transition to secondary school.	

6. Financial Implications

The aims of this proposal are not are not financially driven, but to enable Monmouthshire children and young people to continue their education at a Monmouthshire Secondary School. However, a full cost analysis looking at the financial impacts of the proposal will be undertaken alongside this consultation, paying particular attention to the impact on the Monmouthshire schools affected by the proposal, as well as the impact on home to school transport costs.

A full cost analysis will be presented to the Council's Cabinet alongside the views received as part of this consultation, to determine whether the proposal should be implemented.

7. What Next?

Your views on the proposed changes to secondary school catchment areas are important to us. We really do want you to engage in this consultation and tell us what you think of the proposals, particularly if they may affect you or your children.

Important: This consultation will not make any assumptions, so whether you are for or against the proposed changes, please take this opportunity to have your say

You can tell us what you think by:

- 1) Attending one of the drop in sessions:

Review Area	Date	Venue
Goytre and surrounding areas	5 th February 2019 at 6pm	Goytre Fawr Primary School

All areas day time drop in session	14 th February 2019 9.30am to 11.30am	County Hall, Usk
------------------------------------	---	------------------

- 2) To enable us to carry out detailed analysis of the feedback provided we would urge you to complete the consultation questionnaire, which is available on our website at www.monmouthshire.gov.uk/catchmentconsultation

If you have any questions on the proposals please contact the Access Unit on 01633 644508 or by emailing acesstolearning@monmouthshire.gov.uk.

Please note that the deadline for responses to this consultation is 1st March 2019 at 5pm. Any responses received by the local authority after this closing date will not be considered as part of this consultation.



**Review Area 2
Usk Town & the Surrounding
Areas**

Consultation period:

18th January 2019 to 1st March 2019

Contents

1. The Proposal.....	3
2. The Current Position	4
3. Why are we considering the proposed change?.....	6
4. Background information	7
5. Advantages and Disadvantages of the proposal	9
6. Financial Implications	10
7. What Next?.....	10

1. The Proposal

The Council are considering amending the secondary school catchment area for children and young people currently residing within the town of Usk and the immediate surrounding areas.

The areas identified as being affected by these proposals currently form part of the catchment area for Usk Church in Wales Primary School. The Secondary catchment area at large is designated to Caerleon Comprehensive School, with a small pocket in the area of Llansoy designated to Chepstow School.

The map below illustrates the areas that are being considered under this proposal, and will help you to understand whether you could be affected by the proposed changes.



The Council would like to know your views on whether the secondary school catchment boundary should be amended for the specified areas (shaded area above), to form part of the catchment area for Monmouth Comprehensive School, thus enabling children and young people to continue their education through a Monmouthshire education system.

Alternatively, the Council would like to know your views on whether the status quo should continue, i.e. Caerleon Comprehensive School remaining as the designated catchment school for the affected area.

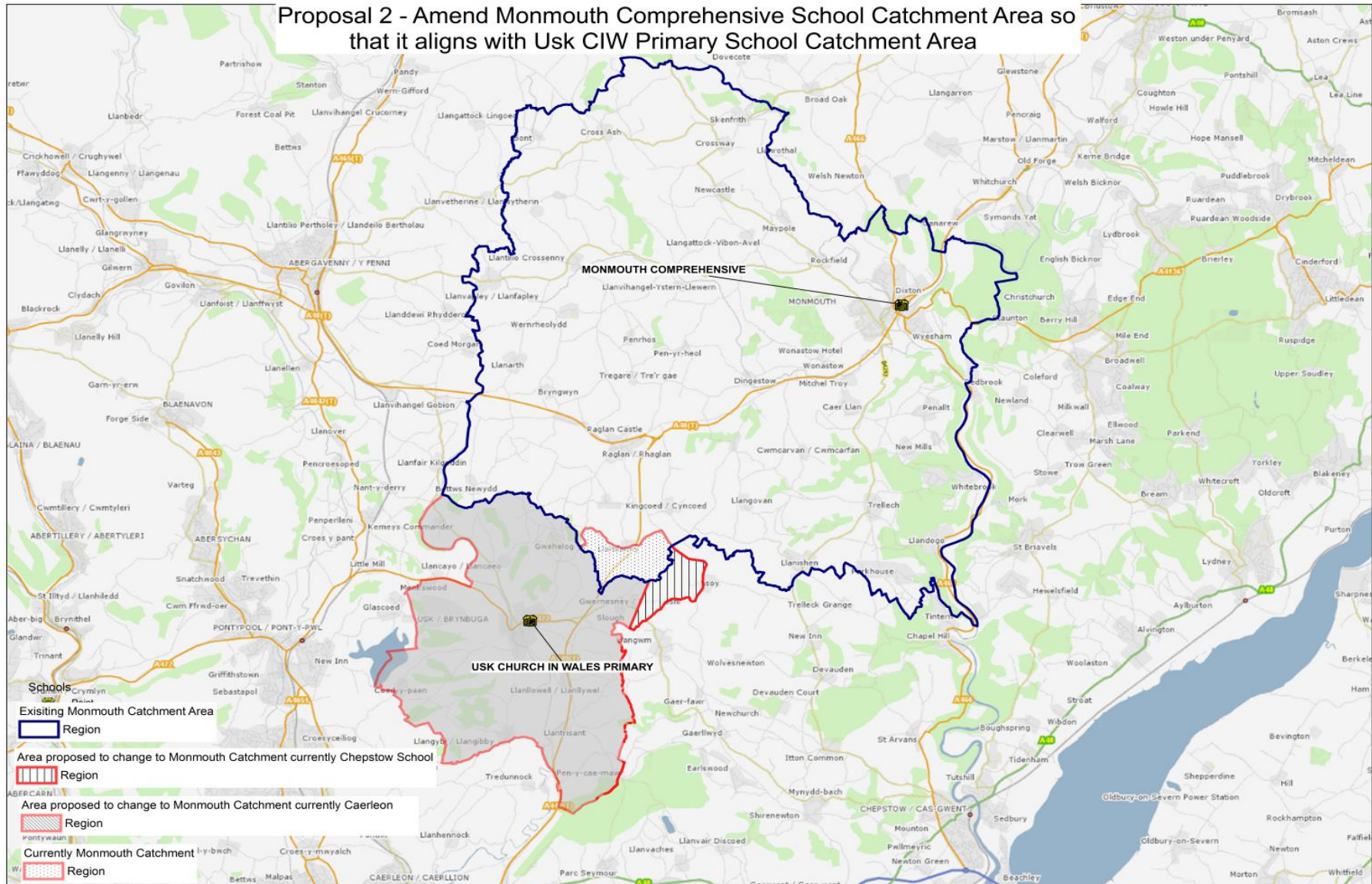
2. The Current Position

The area under review as part of this consultation forms part of the catchment area for Usk Church in Wales Primary School. Usk Church in Wales Primary School is located in the county of Monmouthshire and is considered to be a designated feeder school for Monmouth Comprehensive School, however, its catchment area serves more than 1 secondary school:

- Caerleon Comprehensive School. Situated in the City of Newport and forms the secondary catchment and nearest school for the majority of children and young people that reside within the Usk Church in Wales Primary School catchment area.
- Chepstow Comprehensive School. Situated in Chepstow, Monmouthshire and forms the secondary catchment school for a small number of children and young people that reside within the Usk Church in Wales Primary catchment area. Chepstow School also forms the nearest Monmouthshire Secondary school for a small proportion of the affected area.
- Monmouth Comprehensive School. Situated in Monmouth and forms the nearest Monmouthshire school for the majority of children and young people that reside within the catchment area for Usk Church in Wales Primary School.

The map overleaf illustrates the current position, identifying the area under review and the Secondary school catchments in their current form. For clarity, the shaded area of this map current forms part of the catchment area for Caerleon Comprehensive School / Chepstow School but is proposed to form part the catchment area for Monmouth Comprehensive School under these proposals

Proposal 2 - Amend Monmouth Comprehensive School Catchment Area so that it aligns with Usk CIW Primary School Catchment Area



3. Why are we considering the proposed change?

No designated secondary catchment school within Monmouthshire.

One of the identified aims of our catchment review was to consider the areas of Monmouthshire that do not currently have a designated Secondary catchment School that falls within Monmouthshire. The secondary catchment school is presently one that falls within the city of Newport. The proposed changes to the affected areas would allow children resident in Monmouthshire to access a secondary school that is within the county in which they live.

Transitional arrangements between Primary and Secondary School.

Usk Church in Wales Primary School is the designated primary school for the affected area and is a feeder school for Monmouth Comprehensive School. The proposed changes would see complete alignment between the catchment area for Usk Church in Wales Primary School and Monmouth Comprehensive school, lending support to the existing transitional arrangements, and enabling the cohorts of children to remain together when entering into that daunting transition between Primary to Secondary School.

Access to School places

The parents of children and young people currently residing within the affected area have the opportunity to express a preference for a school at which they wish for their child to attend. This preference does not need to be for the designated catchment school, however, children residing within the catchment area for a preferred school receive a priority in the event of oversubscription.

Those residing within the affected area are not afforded with the above priority for a Monmouthshire school as they do not have a designated secondary catchment school within the county in which they live.

Monmouth Comprehensive School is the nearest Monmouthshire school for the majority of children and young people residing within the affected area. Parental preference together with the feedback from residents of the affected community suggest that there is a keen interest for their children to remain within the Monmouthshire education system as they transition to Secondary School.

Over recent years, the Council has experienced an increasing number of application requests for children and young people from within the affected area to attend Monmouth Comprehensive School. Many of these applications have been unsuccessful at times of oversubscription due to the area not forming part of the catchment area for the preferred school. It has also been suggested that many

parents would apply for a place at Monmouth Comprehensive school if they felt their application would have a high chance of being successful.

The proposals outlined would help in addressing this matter.

Provision of Home to School Transport

A further consideration of the proposed change is the current provision for home to school transport that currently serves the affected area. The council's current policy provides free home to school transport to the nearest or catchment school if residing 2 miles or more from the home address.

The majority of affected area sees home to school transport provision offered to Caerleon Comprehensive School only, as this is both the nearest and catchment school. There is no free home to school transport entitlement for children and young people residing within the affected area that wish to attend a Monmouthshire Secondary School.

Should the proposals be supported and agreed, it would see free home to school transport becoming available to those in the affected area to Monmouth Comprehensive as the newly formed catchment school

4. Background information

An analysis of parental requests made over the last 5 years show that the vast majority of children and young people attending Usk Church in Wales Primary School opt to transition to either Monmouth or Caerleon Comprehensive Schools. The table below provides the numbers transitioning to each of the secondary schools from Usk Church in Wales Primary over the last 5 years.

	Transition to Monmouth Comprehensive	Transition to Caerleon Comprehensive
September 2014	9	10
September 2015	8	21
September 2016	10	16
September 2017	12	24
September 2018	9	20
Total	48	91

The numbers within the above table are children and young people that have been on roll at Usk Church in Wales Primary School, and shows that the majority seek admission into Caerleon Comprehensive School, which in the majority of cases is the designated catchment school.

However, the above does not reflect children that have been unsuccessful in their applications for Monmouth Comprehensive School due to oversubscription issues. The above also does not reflect recent feedback received by the council confirming

that more families wish to attend Monmouth Comprehensive School, however, they do not feel their applications will be successful.

The Council is now seeking formal feedback through this consultation on whether parents would wish for their children to remain within the Monmouthshire education system through Primary to Secondary transition.

Projected Numbers on roll

The table below identifies the number of children that are currently residing within the affected area and therefore those most likely to be affected by the proposed change. The numbers identify the children that will transition from Primary to Secondary school between September 2020 and September 2025.

Current NCY	Transition from Primary to Secondary	Number of Pupils Affected
Year 5	Sep-20	31
Year 4	Sep-21	27
Year 3	Sep-22	29
Year 2	Sep-23	35
Year 1	Sep-24	36
Rec	Sep-25	33
	Total	191

The Council's projected numbers on roll for Monmouth Comprehensive school support that the above children could be accommodated should the proposals be supported and agreed. However, there is an increasing risk of children and young people from the affected area not obtaining places should the status quo remain.

Pupils currently on roll at Caerleon Comprehensive School.

Children and Young People who are currently on roll at Caerleon Comprehensive School will not be affected by these proposals and existing home to school transport arrangements will remain in place until they are no longer attending the school.

5. Advantages and Disadvantages of the proposal

Advantages	Disadvantages
The proposals are supporting Monmouthshire children attending Monmouthshire Schools	Families residing within the affected area would be removed from the catchment area for Caerleon Comprehensive should proposals be agreed.
Families residing within the affected area would have a designated catchment school within the county in which they live	Children and Young People from within the affected area can apply for a school place at Caerleon Comprehensive should they wish. However, there is an increased risk that their application will be unsuccessful as they would then be considered to be an out of catchment applicant.
School catchment areas form part of the oversubscription criteria used to award school places. Children and young people from the affected area would gain an advantage in obtaining a school place at a Monmouthshire school should they form part of the catchment area.	Free home to school transport would only be provided to Caerleon Comprehensive school to those children and young people currently on roll, or in the instance that Caerleon Comprehensive is the nearest school.
Children and young people residing within the affected area would meet the criteria to receive free home to school transport to a Monmouthshire School.	Caerleon Comprehensive school is the nearest school for the majority of the affected area. Therefore, travel distances for some may increase, although travelling times are felt to be relatively similar
Enabling the above would support the robust transition links between Usk Church in Wales Primary and Monmouth Comprehensive, enabling peer groups to remain together on transition to secondary school.	

6. Financial Implications

The aims of this proposal are not are not financially driven, but to enable Monmouthshire children and young people to continue their education at a Monmouthshire Secondary School. However, a full cost analysis looking at the financial impacts of the proposal will be undertaken alongside this consultation, paying particular attention to the impact on the Monmouthshire schools affected by the proposal, as well as the impact on home to school transport costs.

A full cost analysis will be presented to the Council's Cabinet alongside the views received as part of this consultation, to determine whether the proposal should be implemented.

7. What Next?

Your views on the proposed changes to secondary school catchment areas are important to us. We really do want you to engage in this consultation and tell us what you think of the proposals, particularly if they may affect you or your children.

Important: This consultation will not make any assumptions, so whether you are for or against the proposed changes, please take this opportunity to have your say

You can tell us what you think by:

- 1) Attending one of the consultation sessions:

Review Area	Date	Venue
Usk and surrounding area	20 th February 2019 at 6pm	Usk Church in Wales Primary School
All areas day time drop in session	14 th February 2019 9.30am to 11.30am	County Hall, Usk

- 2) To enable us to carry out detailed analysis of the feedback provided we would urge you to complete the consultation questionnaire, which is available on our website at www.monmouthshire.gov.uk/catchmentconsultation

If you have any questions on the proposals please contact the Access Unit on 01633 644508 or by emailing acesstolearning@monmouthshire.gov.uk.

Please note that the deadline for responses to this consultation is 1st March 2019 at 5pm. Any responses received by the local authority after this closing date will not be considered as part of this consultation.



**Review Area 3
Trellech Village & the Surrounding
Areas**

Consultation period:

18th January 2019 to 1st March 2019

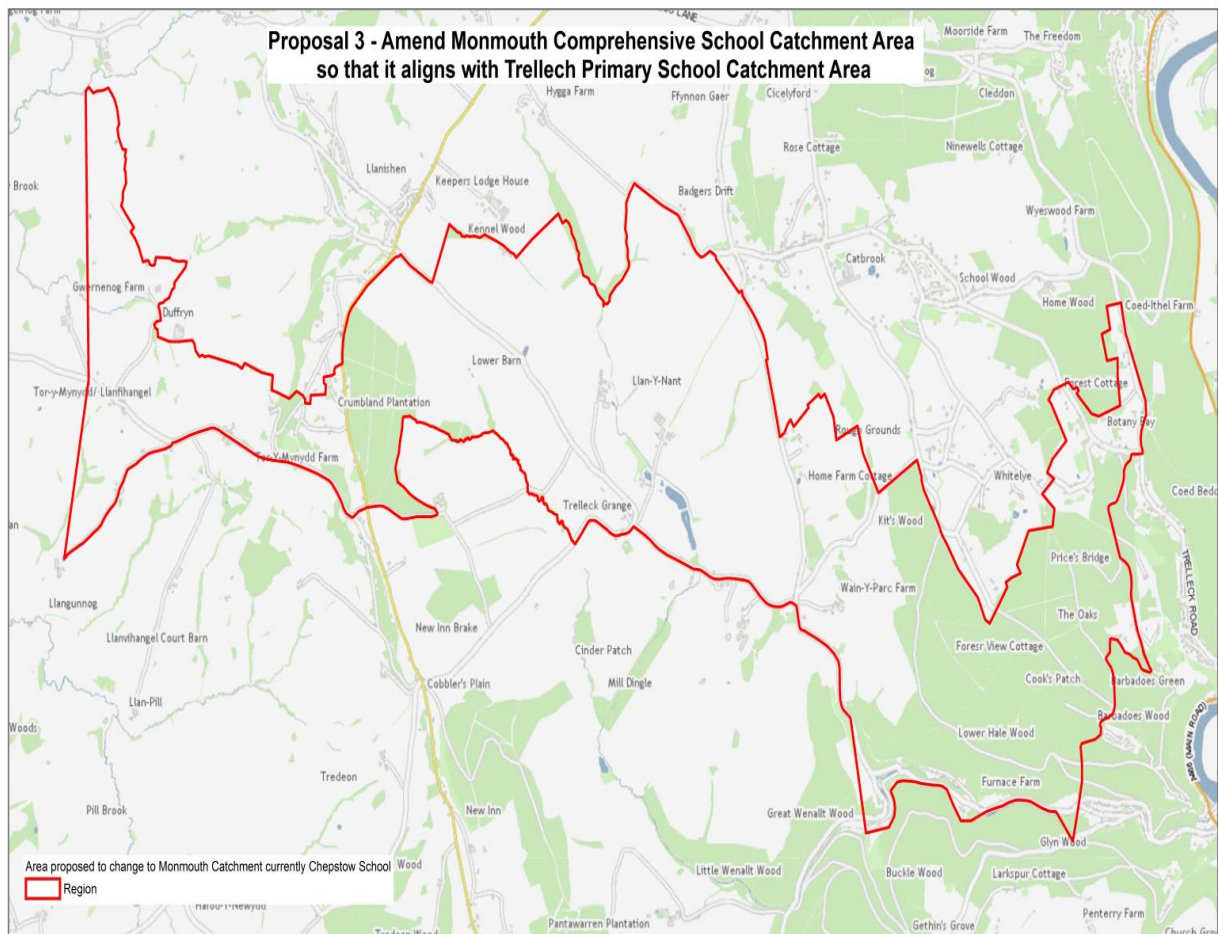
Contents

1. The Proposal.....	3
2. The current position	4
3. Why are we considering the proposed change?	6
4. Background information	7
5. Advantages and Disadvantages of the proposal	8
6. Financial Implications.....	9
7. What Next?	10

1. The Proposal

The Council are considering amending the secondary school catchment area for children and young people currently residing within the village of Trellech and the immediate surrounding areas.

The areas identified currently form part of the catchment area for Trellech Primary School, and Chepstow School. The map below illustrates the areas that are being considered under this proposal, and will help you to understand whether you could be affected by the proposed changes



The Council would like to know your views on whether the secondary school catchment boundary should be amended for the specified areas (area identified above), to form part of the catchment area for Monmouth Comprehensive School, thus aligning the entire catchment area for Trellech Primary to a single secondary school.

Alternatively, the Council would like to know your views on whether the status quo should continue, i.e. Chepstow School remaining as the designated catchment school for the affected area.

The proposals would see the provision of free home to school transport offered to Monmouth Comprehensive School as the newly designated catchment school. School transport may also be offered to Chepstow School in the event that it is identified to be the nearest school.

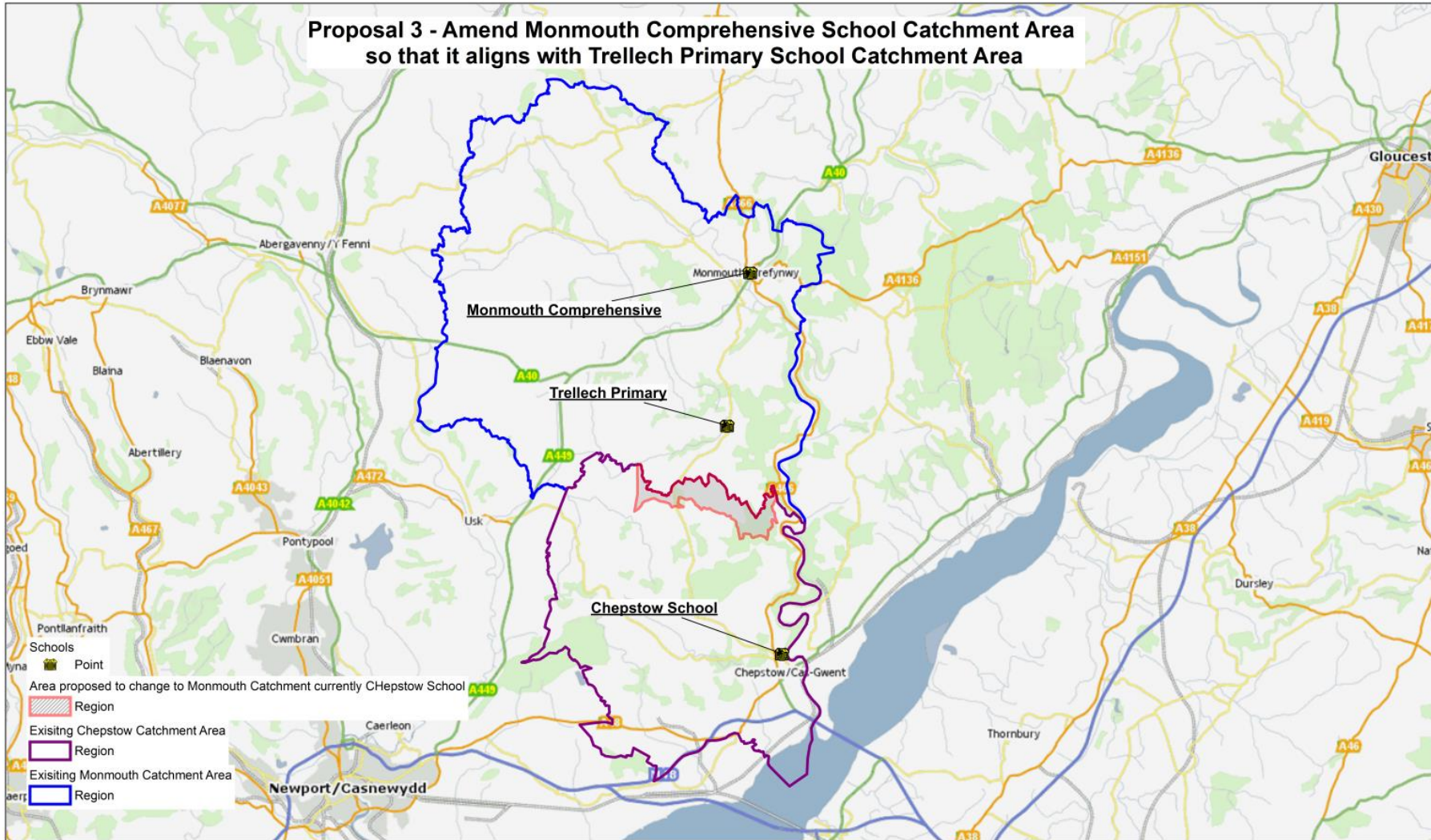
2. The current position

The area under review forms part of the catchment area for Trellech Primary School. Trellech Primary School is located in the county of Monmouthshire and is considered as a designated feeder school for Monmouth Comprehensive School, however, its catchment area serves more than 1 secondary school:

- 1) **Monmouth Comprehensive School**. Forms the secondary catchment school for the majority of children and young people that reside within the Trellech Primary catchment area.
- 2) **Chepstow School**. Forms the secondary catchment school for the affected area and is also the nearest school in most instances for those residing within the affected area.

The map overleaf illustrates the current position, identifying how the area under review relates to existing secondary school catchment areas. For clarity, the shaded area of this map current forms part of the catchment area for Chepstow School, but is proposed to form part of Monmouth Comprehensive School.

**Proposal 3 - Amend Monmouth Comprehensive School Catchment Area
so that it aligns with Trellech Primary School Catchment Area**



3. Why are we considering the proposed change?

Transitional arrangements between Primary and Secondary School.

Trellech Primary School is the designated primary school for the affected area and is a feeder school for Monmouth Comprehensive School. The proposed changes would see complete alignment between the catchment area for Trellech Primary School and Monmouth Comprehensive school, lending support to the existing transitional arrangements, and enabling the cohorts of children to remain together when entering into that daunting transition between Primary to Secondary School.

Access to School places

The parents of children and young people currently residing within the affected area have the opportunity to express a preference for a school at which they wish for their child to attend. This preference does not need to be for the designated catchment school, however, children residing within the catchment area for a preferred school receive a priority in the event of oversubscription.

Those residing within the affected area are not afforded with the above priority for Monmouth Comprehensive school as they do not currently form part of the designated catchment area.

Trellech Primary School, being a feeder for Monmouth Comprehensive School, sees almost all of the children and young people residing within its catchment area wishing to transition to Monmouth Comprehensive School. However, some children and young people from Trellech Primary have been unsuccessful in securing places at Monmouth Comprehensive School during times of oversubscription. This is due to the affected area being outside of the catchment area for Monmouth Comprehensive School.

The above results in some children and young people not being able to transition to Monmouth Comprehensive school with their peer groups.

The proposals outlined would help in addressing this matter.

Provision of Home to School Transport

A further consideration of the proposed change is the current provision for home to school transport that currently serves the affected area. The council's current policy provides free home to school transport to the nearest or catchment school if residing 2 miles or more from the home address.

The affected area sees the availability of free home to school transport being available to Chepstow School as the nearest / catchment school for the affected area. As a result, should children and young people residing within the affected area

secure places alongside their peers at Monmouth Comprehensive, they would not receive an entitlement to free home to school transport.

The proposals outlined would address this matter.

4. Background information

An analysis of parental requests made over the last 5 years show that the vast majority of children and young people attending Trellech Primary School opt to transition to either Monmouth Comprehensive School or Chepstow School. The table below provides the numbers transitioning to each of the secondary schools from Trellech Primary over the last 5 years.

	Transition to Monmouth Comprehensive	Transition to Chepstow School
September 2014	20	0
September 2015	23	0
September 2016	25	0
September 2017	21	3
September 2018	23	3
Total	112	6

The numbers within the above table show children and young people previously on roll at Trellech Primary School, and demonstrates that the majority of children seek admission into Monmouth Comprehensive School, with only a small number transitioning to the current catchment school of Chepstow School.

Over the last 3 years, three children have opted to attend Chepstow School from within the affected area.

Projected Numbers on roll

The table below identifies the number of children that are currently residing within the affected area and therefore those most likely to be affected by the proposed change. The numbers identify the children that will transition from Primary to Secondary school between September 2020 and September 2025.

Current NCY	Primary to Secondary transition	Number of Pupils Affected
Year 5	Sep-20	2
Year 4	Sep-21	0
Year 3	Sep-22	1
Year 2	Sep-23	1
Year 1	Sep-24	1
Rec	Sep-25	1
	Total	6

The Council's projected numbers on roll for Monmouth Comprehensive school support that the above children could be accommodated should the proposals be supported and agreed.

Pupils currently on roll at Chepstow School.

Children and Young People who are currently on roll at Chepstow School will not be affected by these proposals and existing home to school transport arrangements will remain in place until they are no longer attending the school.

5. Advantages and Disadvantages of the proposal

Advantages	Disadvantages
School catchment areas form part of the oversubscription criteria used to award school places. Children and young people from the affected area would gain an advantage in obtaining a school place at a Monmouth Comprehensive school should they form part of the catchment area.	Families residing within the affected area would be removed from the catchment area for Chepstow School should proposals be agreed. However, the Council forecasts that Chepstow School would have sufficient capacity to accommodate any parental requests from the affected area.
Enabling the above would support the robust transition links between Trellech Primary and Monmouth Comprehensive Schools, enabling peer groups to remain together on their transition to secondary school.	
Children and young people residing within the affected area would meet the criteria to receive free home to school transport to Monmouth Comprehensive School.	

Children residing within the affected area would still be able to obtain places at Chepstow School to accommodate any parental preference	
Children residing within the affected area would still be able to receive free home to school transport to Chepstow school in the event that's its determined to be the nearest school.	

6. Financial Implications

The aims of this proposal are not are not financially driven, but to reflect the transitional arrangements in place between primary and secondary schools. However, a full cost analysis looking at the financial impacts of the proposal will be undertaken alongside this consultation, paying particular attention to the impact on the Monmouthshire schools affected by the proposal, as well as the impact on home to school transport costs.

A full cost analysis will be presented to the Council's Cabinet alongside the views received as part of this consultation, to determine whether the proposal should be implemented.

7. What Next?

Your views on the proposed changes to secondary school catchment areas are important to us. We really do want you to engage in this consultation and tell us what you think of the proposals, particularly if they may affect you or your children.

Important: This consultation will not make any assumptions, so whether you are for or against the proposed changes, please take this opportunity to have your say

You can tell us what you think by:

- 1) Attending one of the consultation sessions:

Review Area	Date	Venue
Trellech and surrounding area	12 th February 2019 at 6pm	Trellech Primary School
All areas day time drop in session	14 th February 2019 9.30am to 11.30am	County Hall, Usk

- 2) To enable us to carry out detailed analysis of the feedback provided we would urge you to complete the consultation questionnaire, which is available on our website at www.monmouthshire.gov.uk/catchmentconsultation

If you have any questions on the proposals please contact the Access Unit on 01633 644508 or by emailing acesstolearning@monmouthshire.gov.uk.

Please note that the deadline for responses to this consultation is 1st March 2019 at 5pm. Any responses received by the local authority after this closing date will not be considered as part of this consultation.



**Review Area 4
Llandogo Village & the
Surrounding Areas**

Consultation period:

18th January 2019 to 1st March 2019

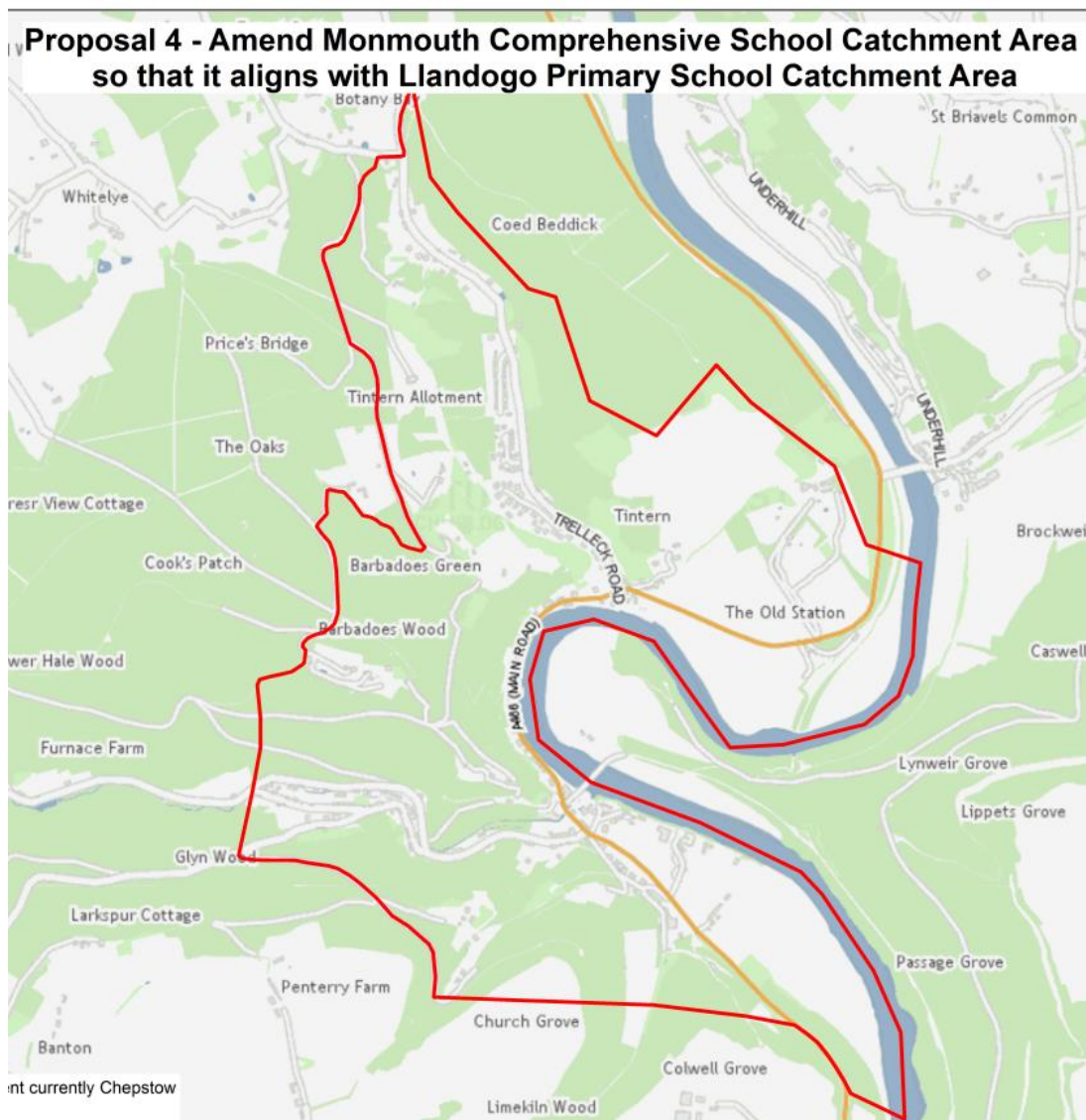
Contents

1. The Proposal.....	3
2. The current position	4
3. Why are we considering the proposed change?	6
4. Background information	7
5. Advantages and Disadvantages of the proposal	8
6. Financial Implications.....	9
7. What Next?	9

1. The Proposal

The Council are considering amending the secondary school catchment area for children and young people currently residing within the village of Llandogo and the immediate surrounding areas.

The areas identified currently form part of the catchment area for Llandogo Primary School, and Chepstow School. The map below illustrates the areas that are being considered under this proposal, and will help you to understand whether you could be affected by the proposed changes



The Council would like to know your views on whether the secondary school catchment boundary should be amended for the specified areas (area identified above), to form part of the catchment area for Monmouth Comprehensive School, thus aligning the entire catchment area for Llandogo Primary to a single secondary school.

Alternatively, the Council would like to know your views on whether the status quo should continue, i.e. Chepstow School remaining as the designated catchment school for the affected area.

The proposals would see the provision of free home to school transport offered to Monmouth Comprehensive School as the newly designated catchment school. School transport may also be offered to Chepstow School in the event that it is identified to be the nearest school.

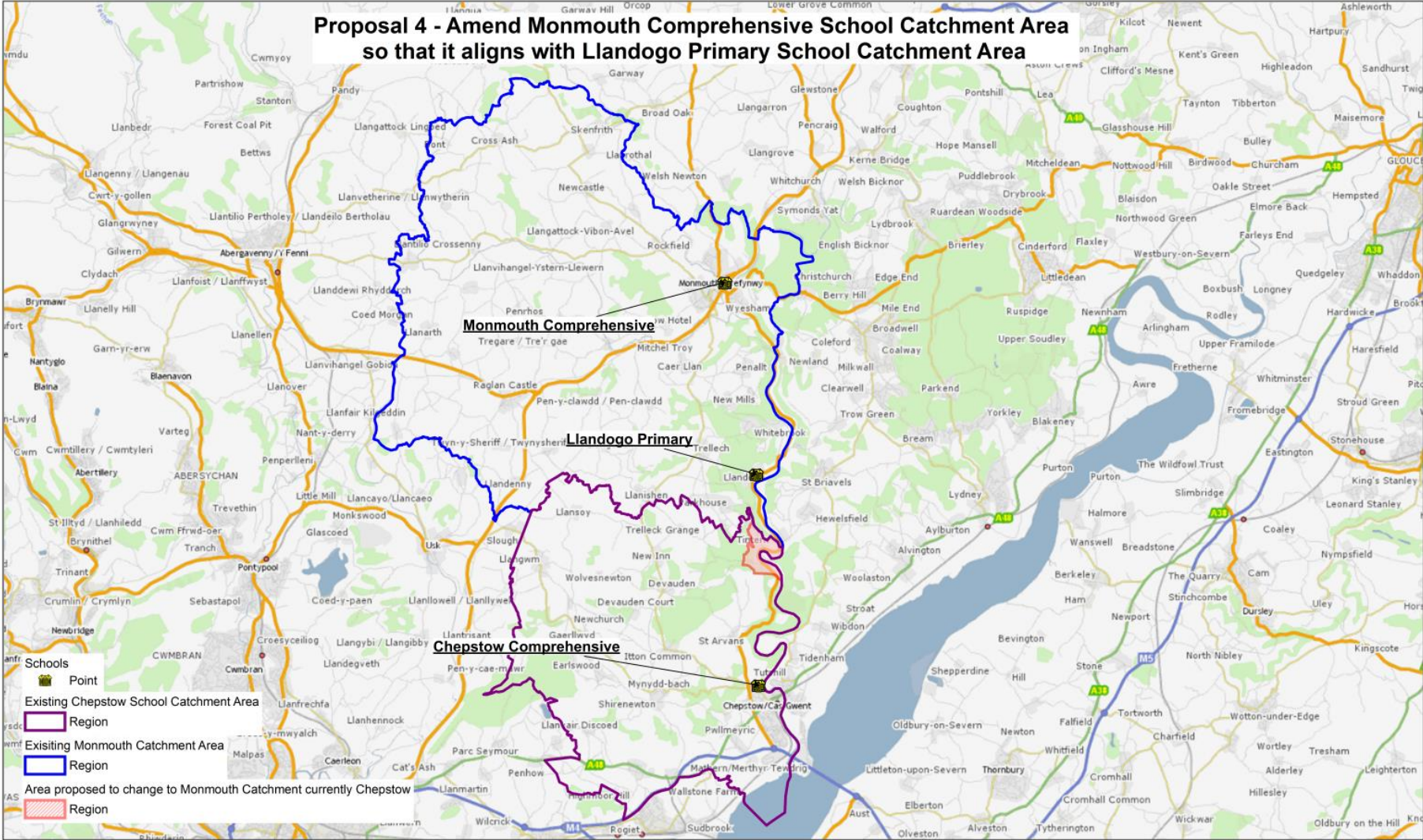
2. The current position

The area under review forms part of the catchment area for Llandogo Primary School. Llandogo Primary School is located in the county of Monmouthshire and is considered as a designated feeder school for Monmouth Comprehensive School, however, its catchment area serves more than 1 secondary school:

- **Monmouth Comprehensive School**. Forms the secondary catchment school for the majority of children and young people that reside within the Llandogo Primary catchment area.
- **Chepstow School**. Forms the secondary catchment school for the affected area and is also the nearest school in most instances for those residing within the affected area.

The map overleaf illustrates the current position, identifying how the area under review relates to existing secondary school catchment areas. For clarity, the shaded area of this map current forms part of the catchment area for Chepstow School, but is proposed to form part of Monmouth Comprehensive School.

Proposal 4 - Amend Monmouth Comprehensive School Catchment Area so that it aligns with Llandogo Primary School Catchment Area



3. Why are we considering the proposed change?

Transitional arrangements between Primary and Secondary School.

Llandogo Primary School is the designated primary school for the affected area and is a feeder school for Monmouth Comprehensive School. The proposed changes would see complete alignment between the catchment area for Llandogo Primary School and Monmouth Comprehensive school, lending support to the existing transitional arrangements, and enabling the cohorts of children to remain together when entering into that daunting transition between Primary to Secondary School.

Access to School places

The parents of children and young people currently residing within the affected area have the opportunity to express a preference for a school at which they wish for their child to attend. This preference does not need to be for the designated catchment school, however, children residing within the catchment area for a preferred school receive a priority in the event of oversubscription.

Those residing within the affected area are not afforded with the above priority for Monmouth Comprehensive school as they do not currently form part of the designated catchment area.

Llandogo Primary School, being a feeder for Monmouth Comprehensive School, sees almost all of the children and young people residing within its catchment area wishing to transition to Monmouth Comprehensive School. However, some children and young people from Llandogo Primary have been unsuccessful in securing places at Monmouth Comprehensive School during times of oversubscription. This is due to the affected area being outside of the catchment area for Monmouth Comprehensive School.

The above results in some children and young people not being able to transition to Monmouth Comprehensive school with their peer groups.

The proposals outlined would help in addressing this matter.

Provision of Home to School Transport

A further consideration of the proposed change is the current provision for home to school transport that currently serves the affected area. The council's current policy provides free home to school transport to the nearest or catchment school if residing 2 miles or more from the home address.

The affected area sees the availability of free home to school transport being available to Chepstow School as the nearest / catchment school for the affected

area. As a result, should children and young people residing within the affected area secure places alongside their peers at Monmouth Comprehensive, they would not receive an entitlement to free home to school transport.

The proposals outlined would address this matter.

4. Background information

An analysis of parental requests made over the last 5 years show that the vast majority of children and young people attending Llandogo Primary School opt to transition to either Monmouth Comprehensive School or Chepstow School. The table below provides the numbers transitioning to each of the secondary schools from Llandogo Primary over the last 5 years.

	Transition to Monmouth Comprehensive	Transition to Chepstow School
September 2014	9	4
September 2015	8	2
September 2016	6	1
September 2017	5	1
September 2018	6	3
Total	34	11

The above table includes numbers of children and young people previously on roll at Llandogo Primary School, and demonstrates that the majority of children from seek admission into Monmouth Comprehensive School, with only a small number transitioning to the current catchment school of Chepstow School.

Over the last 3 years, there have been 5 children that have opted to attend Chepstow school from within the affected area.

Projected Numbers on roll

The table below identifies the number of children that are currently residing within the affected area and therefore those most likely to be affected by the proposed change. The numbers identify the children that will transition from Primary to Secondary school between September 2020 and September 2025.

Current NCY	Primary to Secondary transition	Number of Pupils Affected
Year 5	Sep-20	5
Year 4	Sep-21	7
Year 3	Sep-22	6
Year 2	Sep-23	7
Year 1	Sep-24	5

Rec	Sep-25	4
	Total	34

The Council's projected numbers on roll for Monmouth Comprehensive school support that the above children could be accommodated should the proposals be supported and agreed.

Pupils currently on roll at Chepstow School.

Children and Young People who are currently on roll at Chepstow School will not be affected by these proposals and existing home to school transport arrangements will remain in place until they are no longer attending the school.

5. Advantages and Disadvantages of the proposal

Advantages	Disadvantages
School catchment areas form part of the oversubscription criteria used to award school places. Children and young people from the affected area would gain an advantage in obtaining a school place at a Monmouth Comprehensive school should they form part of the catchment area.	Families residing within the affected area would be removed from the catchment area for Chepstow School should proposals be agreed. However, the Council forecasts that Chepstow School would have sufficient capacity to accommodate any parental requests from the affected area.
Enabling the above would support the robust transition links between Llandogo Primary and Monmouth Comprehensive Schools, enabling peer groups to remain together on their transition to secondary school.	
Children and young people residing within the affected area would meet the criteria to receive free home to school transport to Monmouth Comprehensive School.	
Children residing within the affected area would still be able to obtain places at Chepstow School to accommodate any parental preference	
Children residing within the affected area would still be able to receive free home to school transport to Chepstow school in the event that's its determined to be the nearest school.	

6. Financial Implications

The aims of this proposal are not are not financially driven, but to reflect the transitional arrangements in place between primary and secondary schools. However, a full cost analysis looking at the financial impacts of the proposal will be undertaken alongside this consultation, paying particular attention to the impact on the Monmouthshire schools affected by the proposal, as well as the impact on home to school transport costs.

A full cost analysis will be presented to the Council's Cabinet alongside the views received as part of this consultation, to determine whether the proposal should be implemented.

7. What Next?

Your views on the proposed changes to secondary school catchment areas are important to us. We really do want you to engage in this consultation and tell us what you think of the proposals, particularly if they may affect you or your children.

Important: This consultation will not make any assumptions, so whether you are for or against the proposed changes, please take this opportunity to have your say

You can tell us what you think by:

- 1) Attending one of the consultation sessions:

Review Area	Date	Venue
Llandogo and surrounding area	18 th February 2019 at 6pm	Llandogo Primary School
All areas day time drop in session	14 th February 2019 9.30am to 11.30am	County Hall, Usk

- 2) To enable us to carry out detailed analysis of the feedback provided we would urge you to complete the consultation questionnaire, which is available on our website at www.monmouthshire.gov.uk/catchmentconsultation

If you have any questions on the proposals please contact the Access Unit on 01633 644508 or by emailing acesstolearning@monmouthshire.gov.uk.

Please note that the deadline for responses to this consultation is 1st March 2019 at 5pm. Any responses received by the local authority after this closing date will not be considered as part of this consultation.

This page is intentionally left blank

SUBJECT:	PROPOSAL TO CONSULT ON THE CLOSURE OF MOUNTON HOUSE SPECIAL SCHOOL
MEETING:	CABINET
DATE:	6th MARCH 2019
DIVISION/WARDS AFFECTED:	ALL

1. PURPOSE:

- 1.1 Over the last two years, officers in the Children and Young People's Directorate have worked with colleagues across Monmouthshire schools and the within the authority to put in place effective provision to support our vulnerable learners. A particular facet of that work has been to focus on needs of children with challenging behaviour.
- 1.2 In a previous consultation exercise, Cabinet considered the future of Mounton House Special School as a part of the wider review. Ultimately, it was determined not to progress and to retain the status quo. Following further review the purpose of this report is to seek Cabinet's agreement to consult on the closure of Mounton House Special School.

2. RECOMMENDATIONS:

To agree to consult on the closure of Mounton House Special School.

3. KEY ISSUES:

Background

Mounton House Special School is a single sex boy's school with a designation of pupils with Social Emotional Behavioural Difficulties (SEBD) aged 11 – 16. In recent times, Mounton House has been on an important recovery journey. It was placed in Significant Improvement by Estyn and categorised as a red i.e. a school requiring the highest levels of support. The school, its staff and partners have worked hard and were removed from that Estyn categorisation and have moved to the yellow category, indicating a requirement of a lower level of support.

Last year Cabinet agreed to consult on a series of reforms to Monmouthshire's Additional Learning Needs (ALN) provision. At the heart of these was the ambition was to recreate Mounton House Special School as a special school hub for pupils with SEBD and Autistic Spectrum Disorder (ASD) across the county serving both boys and girls of all ages from seven to 16 (or potentially 19)

However, the capital costs associated with that transformation were far in excess of the cost envelope that had been identified in the business planning process. The final design

costs were c £6.4m compared to a prudential borrowing planning expectation of approximately £2m. We have continued to look at the provision of services for vulnerable learners since that decision and Mounton House has been a key part of our thoughts and considerations. The central question we have asked ourselves is how do we maximise the support that we make available to our vulnerable learners? In light of that question, we have re-reviewed the current provision in Mounton House; we have looked at three key areas:

Strategic

The needs of students are becoming increasingly complex; the broad heading of SEBD now covers a multitude of contributing conditions. We now better understand attachment disorder, the impact and consequences of Adverse Childhood Experiences (ACEs) and the impact of childhood traumas and their impact on children and young people. Equally, developments in neuroscience are helping us to understand why children present and behave in certain ways. In addition to this, there are a growing number of students with ASD within Monmouthshire, for which suitable placements need to be found.

The provision in MHSS is, due to its current designation, too narrowly focused on boys alone and those children of a secondary age this means we are unable to meet the needs of many of our children with additional needs and vulnerabilities. We currently place all girls and younger pupils in out of county placements; these can be costly (both in terms of the placement and additional transportation costs). Furthermore, 'out of county' placements mean that children are educated away from their own community and friendship groups.

Financial:

Pupils attending Mounton House from other authorities pay a placement cost of £42,304 for a day placement and £71,739 for a residential placement, however, this does not recover the whole cost of running the school which has resulted in Monmouthshire County Council having to subsidise these places.

The financial cost of running Mounton House in the financial year 2018/19 is £1,559,952, allowing for reduced levels of recoupment the net cost to Monmouthshire County Council was £803,120. The low numbers of Monmouthshire pupils in the school means that the residual cost to the Authority for our own pupils is currently £114,731. In the next academic year this will rise to £232,238 in September 2019.

In order to compare these costs to other providers in the market place an annual placement in Headlands Special School is £45,000 and Tallocher, an independent school in Monmouthshire is c. £65,000.

Economic:

Over the last seven years, the number of pupils on roll in Mounton House have reduced significantly; in January 2015 there were 42 pupils on roll, today the current number on roll is 21. Of these, two are residential pupils and seven reside in Monmouthshire. None of the residential pupils are from Monmouthshire.

We anticipate that from September 2019 there will be 12 students on roll with four residing in Monmouthshire. There will not be any residential students.

The economic case asks us to consider whether this provides the authority with value for money.

Conclusion:

Looking across the three areas set out above there are clearly challenges for the school. However, it is critical to recognise that there is significant resource and expertise in Mounon House Special School that is without question. The challenge for the Children and Young People's Directorate is how to access that knowledge and resource so that it benefits as many of our young people as possible. The structure now does not easily allow the wider education or children's services community access to that expertise.

Based on the factors set out above and in discussions with senior colleagues and politicians we have resolved that the most appropriate route of action is to consult on the closure of MHSS. The consultation paper is attached in appendix 1 and includes timelines for the consultation period.

4. OPTIONS APPRAISAL

The consultation paper lays out four options, these are detailed in section 7.1. These are:

- i. Do nothing and maintain status quo.
- ii. Develop a commissioned agreement with an independent provider to deliver SEBD provision on behalf of the Local Authority.
- iii. To change the type of provision offered at Mounon House Special School to meet the requirements of the in county growing need.
- iv. To close Mounon House Special School to allow the Council an opportunity to develop more appropriate provision.

Option 4 is the preferred option.

5. REASONS:

The reasons that this request have been brought forward are set out above. The financial cost and the consequential costs for Monmouthshire pupils makes the provision financially unsustainable. The number of pupils attending the school from out of county has reduced as authorities either develop their own provision or look to provide support in their local schools. Full details of the decision are outlined in the consultation document.

6. RESOURCE IMPLICATIONS:

These are outlined in section 9.5 of the consultation document.

7. WELLBEING OF FUTURE GENERATIONS IMPLICATIONS (INCORPORATING EQUALITIES, SUSTAINABILITY, SAFEGUARDING AND CORPORATE PARENTING):

This is included in appendix 3 of the consultation document.

8. CONSULTEES:

Senior Leadership Team
Departmental Management Team
Employee services

9. BACKGROUND PAPERS:

Pupil Data
Budgets
School Organisation Code

10. AUTHOR:

Will McLean

11. CONTACT DETAILS:

Tel: 01633 644582

E-mail: Willmclean@monmouthshire.gov.uk



CONSULTATION DOCUMENT

Closure of Mounton House Special School

Contents

1. Glossary of terms used in this document	2
2. Introduction	3
3. Consultation Arrangements.....	4
3.1 Formal consultation process	4
3.2 Consultation with Children and Young People.....	5
3.3 Conclusion of the Formal Consultation process	5
3.4 Implementation of the Proposals.....	6
3.5 Consultation process timeline	6
4. Background to the review of Inclusion Services in Monmouthshire.....	8
5. Current provision across Monmouthshire	11
6. The Proposal.....	13
6.1 Background to the Proposal	13
6.2 Reasons for the proposal	13
6.3 Expected outcome of the proposals	15
7. What options for change did we consider?.....	15
7.1 Options Appraisal	15
7.2 The Preferred Option	16
7.3 Children and Young People on roll at Moun-ton House School	16
8. Details of Affected Schools	17
8.1 Analysis of Numbers on Roll at schools affected by the proposals	17
8.2 Projected Need	18
8.3 Projected Numbers at affected schools	18
9. Impact of proposals.....	19
9.1 Staff employed at affected school	19
9.3 Quality and standards of education.....	20
9.4 Welsh in Education Strategic Plan (WESP)	22
10. Finance	23
11. Home to School Transport.....	23
12. Land and Buildings	23
13. Risks and counter measures.....	23
14. Other Information	24
Appendix 1 - Response Pro-forma	25
Appendix 2 - List of Consultees	26
Appendix 3 - Future Generations Evaluation.....	27

1. Glossary of terms used in this document

Abbreviation	Description
ALN	Additional Learning Needs
SEBD	Social, Emotional and Behavioural Difficulties
ASD	Autistic Spectrum Disorder
SLD	Severe Learning Difficulties
SLCD	Speech, Language and Communication Disorder
PMLD	Profound and Multiple Learning Difficulties
SNRB	Special Needs Resource Base
LA	Local Authority
NOR	Numbers on Roll

2. Introduction

Monmouthshire County Council has a statutory duty to secure sufficient and suitable school places for children within its County, and in doing so ensure that resources and facilities are efficiently utilised to deliver the education opportunities that our children deserve.

This document represents the Council's responsibilities as part of the School Standards and Organisation (Wales) Act 2018 to consult with appropriate stakeholders when giving consideration to any significant school reorganisation proposals.

This consultation relates to the Council's provision for children with Social and Emotional Behavioural Difficulties (SEBD), in particular, the current provision offered at Mounton House Special School. This consultation document clarifies our aims for the future, identifies the key principles behind our proposal, and provides an analysis of both current and projected need. It refers to the Welsh Government plans to transform expectations, experiences and outcomes for children and young people with SEBD, specifically through the introduction of new legislation under the Additional Learning Needs and Tribunal (Wales) Act planned for implementation from September 2020.

This document allows interested parties to understand the detail behind the Council's proposals, and provides them with an opportunity to contribute to the process by means of asking questions, putting forward comments and observations, or suggesting alternative proposals that they feel should be considered. For further information on the statutory processes associated with these proposals, please see section 3.

3. Consultation Arrangements

The Council proposes to close Mounton House Special School, which is situated in the South of the County and offers provision for boys aged 11-16 with Social and Emotional Behavioural Difficulties.

The Council is now engaging in statutory consultation processes with all interested parties to ensure that any decision taken by the Council is one that is informed. Your views on the proposed changes really are very important to us, and we would like you to engage with us throughout this consultation and therefore will ensure that there are appropriate opportunities for you to have your say, particularly if the proposals impact on either you personally or your children.

The timescales for the formal consultation aspects of these statutory proposals are:

Statutory Consultation Period commences	Statutory Consultation Period concludes	Period of consultation
18 th March 2019	29 th April 2019	6 weeks (including 20 school days)

3.1 Formal consultation process

The formal consultation process represents an opportunity for people to learn about the proposal, ask questions and make comments that will be recorded and considered when the Council determines whether or not proposals are to be implemented.

The Council seeks to engage with a wide range of stakeholders on the proposals outlined in this consultation document. A full list of the consultees can be found under Appendix 2.

As part of the consultation process, the Council will hold consultation sessions with staff, governors, parents and members of the community to ensure engagement with all interested parties who may wish to learn more about the proposal. These sessions will take place on:

Consultee	Date	Venue
Staff	28 th March at 3.30pm	Mounton House Special School
Governors	28 th March at 4.30pm	Mounton House Special School
Parents / Interested parties	28 th March at 5.30pm	Mounton House Special School

Council Officers will be in attendance to explain the proposals in detail and answer any questions and ensure all comments/views made are recorded.

In addition to the above, any views, comments, or questions on the proposals can be submitted to the Council by:

- Completing the online consultation questionnaire relevant to these proposals and available via www.monmouthshire.gov.uk/statutoryconsultation
- Completing the response pro-forma which can be found under appendix 1 and returning it to School and Student Access Unit, Monmouthshire County Council, PO Box 106, Caldicot, NP26 9AN.

Comments must be submitted to the Authority by midnight on the **29th April 2019**.

It is important to note that any unfavourable comments made during the consultation period will not be treated as objections to the proposals, but will be accepted as adverse comments. Objections to the proposals can only be accepted after the consultation period has concluded and should the Council determine to proceed with the proposals by way of publishing statutory notices. If you wish to object, you will need to do so in writing should the Council enter into a statutory objection period. If consultees submit a request during the objection period, asking for a response submitted at the consultation stage to be treated as an objection this will be accepted.

3.2 Consultation with Children and Young People

The views of children and young people are extremely important to the Council and therefore children and young people will be provided with opportunities to contribute to this consultation process. The Council has produced a summary version of this consultation document which will be made accessible for all children and young people affected by this proposal.

The Council will also hold sessions with all of the children and young people on roll at Mounton House Special School where this is felt to be appropriate and practicable. Our consultation with children and young people will be supported by key professionals and their views captured and considered in any reports that determine our way forward.

3.3 Conclusion of the Formal Consultation process

The opportunity to respond to the proposals outlined within this consultation document will conclude on **29th April 2019**. The Council's Cabinet will then be provided with a consultation report analysing the views shared by consultees during the formal consultation process and determine whether or not they wish to proceed with the proposal. A copy of the consultation report will also be made available to consultees within 13 weeks of the closure of the formal consultation period.

If the decision is taken by the Council's Cabinet to proceed with the proposals, a statutory notice will be published. The Council will allow for a statutory notice period lasting 28 days from the date of publication to enable consultees to express their views in the form of supporting or objecting to the proposals.

The Council's Cabinet will then consider the responses received during the statutory notice period in the form of an objection report, and make the final decision as to whether to proceed with the proposal.

The proposed timetable for decision making following the formal consultation process is:

Stage of process	Key date
Cabinet consider the results of the consultation and determines whether to proceed with proposals	5 th June 2019
Council publish statutory notice and enter into objection period	17 th June – 15 th July 2019
Cabinet consider the objection report and determine whether or not to implement the proposals	4 th September 2019

3.4 Implementation of the Proposals

Should the outcome of the statutory processes outlined in this document conclude that proposals are to proceed as presented, Mouton House Special School will close with effect from 31st December 2019.

3.5 Consultation process timeline

Process	Key dates
Publication of formal consultation document	18 th March 2019
Deadline for responses to consultation proposals	29 th April 2019
Publication of consultation report	29 th May 2019
Consultation report to be presented to Cabinet <i>Cabinet consider consultation report and determine whether to proceed with proposals</i> If agreed - Proceed to next stage If not agreed - proposals will end	5 th June 2019
Publication of Statutory Notices and enter into objection period <i>If approved, the Statutory Notice will be published on the County Council's and any other proposer's websites and posted in the named schools and other</i>	17 th June 2019

<p><i>conspicuous places within the community. Copies of the notice will be made available to the relevant schools to distribute to pupils, parents/carers and members of staff.</i></p> <p><i>Opportunity to formally object to the proposals.</i></p>	
<p>Deadline for submitting objections to proposals <i>28 days from date of publishing statutory notices</i></p>	15 th July 2019
<p>Objection report published to consultees</p>	By 19 th August 2019
<p>Council publish Cabinet decision</p>	16 th September 2019
<p>Implementation of proposals <i>Staggered implementation – please see appendix 4</i></p>	31 st December 2019

4. Background to the review of Inclusion Services in Monmouthshire

Monmouthshire is committed to improving the educational achievement and attainment for all children and young people in the county through the provision of an inclusive education system that places the child or young person at the centre.

Through our work with schools, parents and key partners, we seek to:

- Secure equality of access to education for all children and young people
- Deliver a high quality and inclusive curriculum for all learners
- Educate our children and young people in their local communities whenever possible
- Support children and young people and their families to enable them to live a happy and fulfilling life
- Provide meaningful opportunities for learners to access support when they need it and return to their community school as soon as they are able
- Meet the needs of children and young people now and be suitably adaptable to meet changing needs in the future

The aims above link directly to our Directorate core values, which aspire to ensure that all of our children and young people will:

- **Be ready for school** - through engagement with our Early Years and Flying Start programmes.
- **Be in school** - supported by our Access and Education Welfare teams.
- **Be well behaved** - through support from our Behaviour and Inclusion teams.
- **Be well taught** - by the teachers and teaching assistants in our schools.

Over the last five years, we have made progress towards fulfilling this commitment for the majority of our children and young people.

Most recently the Local Authority consulted on changes to our provision for pupils with ALN (Additional Learning Needs) and have commenced the work on developing the final agreed model to meet the needs of these pupils. However, feedback in response to our consultation and the financial cost of implementing proposals for our learners with social, emotional and behavioural difficulties (SEBD) mean that we needed to reconsider and/or develop our proposals further.

In our initial review we included an analysis of current and projected pupil needs for SEBD. This analysis indicated that:

- Our SEBD provision did not meet the needs this group of vulnerable learners because the current provision within Monmouthshire is for boys only and between the ages of 11 years and 16 years. As a result, primary aged pupils and girls with SEBD are accessing education in a range of out of county placements.

- The proportion of primary and secondary fixed term exclusions shows an increasing trend over the past 5 years. The number of permanent exclusions have increased over the same period and particularly in the last three years.
- There is a need to support practitioners to develop skills and capacity within the school system to ensure that more pupils with SEBD are well supported within their local area and wherever possible in mainstream schools.
- The increasing financial pressures associated with the significant numbers of children and young people being educated outside Monmouthshire were not only having a significant impact on the overall provision for children and young people in schools, but also on other service areas such as the Passenger Transport Unit.
- Our current model would not enable us to fully meet the requirements of the ALN Act Wales (2018) and draft 'Additional Learning Needs Code for Wales' (2018) when it is implemented from September 2020.

The aim of this reform programme is to secure equality of access to education for children and young people, with SEBD, to enable them to participate in, benefit from and enjoy learning by:

- **Securing excellent teaching and learning** to deliver a high quality and inclusive curriculum for all learners and in doing so this will underpin all our systems and processes
- **Building the capacity of schools** to educate their children and young people in their local community and within the Council wherever possible
- **Implementing systems and processes to facilitate early assessment, intervention and support** using a range of multi-agency providers including third sector organisations
- **Securing effective School to School and Cluster partnership arrangements** to become the key driver for the implementation of our strategy
- **Maintaining a consistent approach to nurture and well-being** to support learners and their families across the county
- **Securing effective and transparent multi-agency working** to ensure the best possible outcomes for learner's well-being and achievement
- **Maintaining home / host school registration and establishing revolving door arrangements** to provide opportunities for children and young people to access the support they need and return to their community wherever appropriate.
- **Securing good access to local, high quality, flexible provision** that is appropriate and is able to meet current and changing needs
- **Adopting an "invest to save"** approach in order to achieve best practice and build sustainability

The Council's Inclusion Strategy sets out the guiding principles applied to ensure our proposed model of delivery addresses the local needs of our children as follows:

- All of our children and young people are valued, whatever their needs, so that they can experience success in their learning, reach their potential, enjoy high levels of well-being and maximise their life chances

- Meeting the needs of children and young people with SEBD is a priority and is everyone's responsibility
- The overwhelming majority of children and young people are educated with their peers and in their local community
- Appropriate, specialist provision to meet the needs of most of our children and young people with SEBD is available within the local authority
- All parties, including schools, parents and wider agencies work together and in the best interests of the child

In considering our options and developing our proposals we have paid due regard to the requirements of the Future Generations Act (Wales) 2015, the United Nations Convention on the Rights of the Child (UNCRC), the Additional Learning Needs and Education Tribunal (Wales) Act 2018 and recommendations from Donaldson's 'Successful Futures' Report.

5. Current provision across Monmouthshire

The Council currently supports pupils with SEBD by utilising a combination of provision. This includes:

- specialist advice, guidance and support for pupils in a mainstream class
- specialist provision in a Special Needs Resource Base (SNRB) within mainstream school
- support and intervention from the Pupil Referral Service (PRS)
- bespoke support delivered by our Pupil Referral Unit
- in our special SEBD school in Monmouthshire for boys between the ages of 11 and 16 years
- in a special school in another LA
- in a few cases, in an independent special school outside of the county.

Our current offer for children and young people with SEBD is delivered and located at a number of sites as indicated below:

Mounton House Special School

Mounton House Special School is situated in the South of the County in the village of Pwylmeric, Chepstow.

The school currently offers both day and residential provision to boys aged 11-16 with a diagnosis of Social and Emotional Behavioural Difficulties (SEBD). Whilst the School is located in Monmouthshire, it offers provision for many children and young people that reside outside of the County. A total of 58 places are available in line with the school's current capacity.

Pupil Referral Service

The main focus of Monmouthshire's Pupil Referral Unit is to maintain young people on the roll of schools. Monmouthshire's Pupil Referral Unit is a portfolio provision which has sites in Abergavenny, Monmouth and Chepstow.

These sites provide provision for predominantly Key Stage 4 pupils who are: at risk of being permanently excluded, who have been permanently excluded or who have moved into the area and it would be difficult to place within a mainstream provision due to their particular circumstances; e.g. LAC pupils who have had numerous school placements and have had bespoke packages developed.

For Secondary aged pupils, staff in each of the sites can work on an outreach basis; i.e. supporting the children in schools, whether this is in lessons or teaching referred pupils in groups as part of the school timetable or at the aforementioned sites by providing bespoke packages of intervention for referred pupils.

Young people are maintained on a school roll and dual registered wherever possible. The Pupil Referral Service aims to maintain young people on a school roll, however when it is clear that all avenues have been exhausted to support a return to school, pupils are registered with the Pupil Referral Service.

For primary aged pupils young people are maintained on a school roll and support and intervention is provided to support both the school and young person. Where it is clear that the young person has additional needs that may require longer term specialist provision the Pupil Referral Unit will work closely with the school and colleagues in ALN to ensure that there is a smooth transition to any new prospective placement.

Another branch of the Pupil Referral Unit also delivers Education Other Than At School (EOTAS) and provides Tuition for young people who cannot attend school due to medical conditions. These young people will have supporting letters from consultants. The EOTAS branch of the Pupil Referral Unit will deliver this educational provision either at the centres identified above or at the pupil's home dependent upon the severity of the condition.

Out of County Provision

Where our children and young people's needs cannot be met in county, specialist provision is secured. The main providers of this provision are Headlands School Penarth and Priory Talocher School in Monmouth.

6. The Proposal

The Council is consulting on the closure of Mounton House Special School with effect from 31st December 2019.

Should the proposals to close Mounton House Special School proceed following statutory processes, the Council will consider the opportunities to invest in a new delivery model that meets the full range of needs of children and young people residing within the county who have Social and Emotional Behavioural difficulties.

6.1 Background to the Proposal

In September 2018, Cabinet considered feedback from consultees on the proposed new model for the delivery of ALN and Inclusion Services. Whilst members agreed to proceed with proposals outlined in section 2 of the consultation report, they decided not to proceed with the proposal below, but to significantly recast the proposals and re-consult.

To close Mounton House Special School and establish a new special school located on the site of the existing Mounton House Special School that will deliver the full range of provision required to meet the needs of children and young people aged 3-19 with ASD, SEBD, PMLD and severe learning difficulties within the County.

This proposal has been developed in response to the Cabinet's decision and direction to reconsider and recast the proposal above.

6.2 Reasons for the proposal

Mounton House Special School has a capacity for 58 boys aged 11-16 with a primary need of Social and Emotional Behavioural Difficulties. However, it is becoming increasingly evident the type of provision currently offered at the School does not fully meet our county need. For example, the offer available is limited to key stages 3 and 4 and does not include girls. In addition, the current provision does not meet a broader range of additional needs, which have associated behavioural difficulties.

Numbers on roll

The number of children and young people on roll at Mounton House Special School has reduced significantly over the last 5 years.

The table below highlights the number of children on roll at the school over the last 5 years, as per the annual census return to Welsh Government:

January 2015	January 2016	January 2017	January 2018	January 2019
42	40	33	32	21

As at the January 2019 census return, there were 21 children and young people on roll at Mounton House Special School, 7 of which are residing within Monmouthshire. Of the 21 currently on roll, 2 are accessing the provision on a residential basis.

The anticipated position going forward reflects a continuation of falling numbers on roll with an expected 14 children on roll in September 2019, 6 of whom are residing within the county. This places the school in an anticipated position of holding 76% surplus places. From September 2019, the Council is not anticipating that there will be any children and young people accessing the school on a residential basis.

The falling numbers on roll is a clear reflection that the current provision offered at Mounton House Special School is not meeting our in county needs in an effective and efficient way.

Placement costs

With only 6 Monmouthshire children expected to be on roll in September 2019, the average placement costs per Monmouthshire child is expected to be in excess of £154,000 per Monmouthshire pupil. Please refer to section 9.5 for more information on the financial costs associated with the current provision at Mounton House Special School.

The ongoing placement costs in their current form are considered to be unsustainable.

Current provision and required need

The current provision offered at Mounton House Special School caters for boys only, aged 11-16 with a statement for Social and Emotional Behavioural Difficulties (SEBD).

Our most recent review has identified that our in county SEBD provision does not meet the needs of many of our vulnerable learners due to the type of provision currently offered at Mounton House Special School.

The Council is seeing an increasing demand for children and young people with needs identified as being ASD / SEBD for both boys and girls, across all age ranges. As a result, primary aged pupils and girls with SEBD are accessing education in a range of out of county placements. Boys of secondary age who have a diagnosis of ASD alongside SEBD are also accessing their provision at specialist placements outside of the county.

Out of County Placement Costs

As the provision currently offered at Mounton House Special School does not meet all of our in county needs for children and young people with challenging behaviour, there are a number of children and young people that are placed at out of county specialist placements.

There are current 16 pupils with challenging behaviour placed at out of county specialist placements (Headlands and Talocher), at a significant cost to the Council. The closure of Mounton House Special School will allow the Council an opportunity to explore options of delivering an alternative provision that can meet more of our learners needs within county.

6.3 Expected outcome of the proposals

The closure of Mounton House Special School will allow the authority to invest its resources in meeting the needs of a wider range of children with SEBD in a more flexible way. This will result in a reduction in the number of children and young people required to access provision outside of their communities.

The current costs per Monmouthshire pupil is £114,731, which is forecast to increase to in excess of £154,000 per Monmouthshire pupil from September 2019. Should the proposals proceed; the resources released will allow the Council to use the funding to support the identified needs of a wider range of learners.

7. What options for change did we consider?

A description of the options considered, how they were considered and the reasons why these options have been discounted

7.1 Options Appraisal

Option 1 – Do nothing and maintain the status quo. This would mean that there would be no change to the current provision

Option 1	
Advantages	Disadvantages
Minimal risk / minimal disruption to de-stabalising existing service delivery	We will not fully meet the needs of children and young people in Monmouthshire as indicated by our review of provision.
	We will continue to place a large number of children and young people in provision outside of the county
	The very high cost of out of county placements would continue to rise.

Option 2 – Close Mounton House Special School to allow the Council an opportunity to develop more appropriate provision.

Option 2	
Advantages	Disadvantages
Provision would be developed to meet identified additional learning needs for all key stages	

The number of children and young people needing to attend out of county placements would reduce.	Risk of disruption to service delivery whilst new model is being established.
More pupils would be able to remain in their local school, significantly reducing travel times.	Possible loss of employment for some staff
Maximise the use of resources available, including sharing staff expertise, developing strong school- to-school working and strengthening the transition between primary and secondary phases.	Cost to change to this new model of delivery.

7.2 The Preferred Option

The Council' preferred option at this stage of the review is option 2. The Council will fully explore all other available options in developing a new delivery model that will allow the council to:

- Develop provision to meet the needs of a wider group of vulnerable learners to include girls and primary aged pupils.
- Support practitioners to develop skills and capacity within the school system to ensure that more pupils with SEBD are well supported within their local area and wherever possible in mainstream schools.
- Reduce financial pressures associated with the significant numbers of children and young people being educated outside Monmouthshire.
- Reduce the level of home to school transport costs.
- Meet the requirements of the ALN Act Wales (2018) and draft 'Additional Learning Needs Code for Wales' (2018) when it is implemented from September 2020

The Council now wishes to gather the views of stakeholders for consideration when determining a way forward.

7.3 Children and Young People on roll at Mounton House School

If the proposal to close Mounton House Special School is approved following statutory consultation processes, the Council will work with placing local authorities to ensure that suitable alternative arrangements are in place to minimise disruption to the children and young people affected by these proposals.

Through the process of a review of the statement of SEN together with close consultation with the home local authority (where applicable), appropriate alternative provision will be identified.

For the five children and young people entering into year 11 in September 2019, the Council proposes to explore options to maintain their existing provision, allowing them to complete their current studies.

8. Details of Affected Schools

The following table provides information on the names, locations and categories of all schools likely to be affected by the proposals.

School Name & Location	Language Category	School Type	Capacity & Admission Number	Age Range	Pupil Numbers PLASC 2019
Monmouth Comprehensive School, Monmouth	EM	Community	1600/253	11-18	1583
King Henry VIII Secondary School, Abergavenny	EM	Community	1308/219	11-18	951
Caldicot School, Caldicot	EM	Community	1502/253	11-18	1302
Chepstow School, Chepstow	EM	Community	1282/193	11-18	866
Mounton House Special School, Chepstow	EM	Community	58	11-16	21
Pupil Referral Services	EM	Pupil Referral Service	n/a	11-16	18

8.1 Analysis of Numbers on Roll at schools affected by the proposals

The following table shows the number of pupils that have been attending schools affected by the proposals since January 2015, based on PLASC data.

School Name	Capacity & Admission Number	Current NOR	PLASC 2018	PLASC 2017	PLASC 2016	PLASC 2015
Monmouth Comprehensive School & SNRB	1600/253	1583	1582	1582	1626	1638

King Henry VIII Secondary School	1308/219	951	973	956	960	971
Caldicot School & SNRB	1502/253	1302	1312	1282	1159	1299
Chepstow School	1282/193	866	928	977	978	928
Mounton House Special School	58	21	32	33	40	42
Pupil Referral Services	n/a	18	15	11	5	5

The below table shows the current numbers of Monmouthshire children with SEBD / ASD currently accessing provision outside of the County.

Independent Specialist Provision	Number of Pupils attending Specialist provision
Talocher and Headlands	16

8.2 Projected Need

The table below shows the current number of children with a statement for either behaviour difficulties or ASD.

NCY	ASD	BESD	Total
FP	13	3	16
KS2	23	15	38
KS3	29	9	38
KS4	16	9	25
KS5	9	3	12
Total	91	39	130

Whilst not all of those indicated in the above table will require specialist placement, it is evidence of the Council's growing need for provision across all key stages for children and young people with ASD, and for Primary age children with behavioural needs. The current offer within the Council is not sufficient to be able to meet the needs of all of these children and young people within County, and therefore our access to provision outside of the authority will continue should the status quo remain.

8.3 Projected Numbers at affected schools

The following table show the projected numbers on roll at Mounton House Special School.

Year Group	2019/20	2020/21	2021/22
7	TBC	TBC	TBC
8	3	TBC	TBC
9	1	3	TBC
10	4	1	3
11	6	4	1
Total	14	8	4

The above numbers are concluded from known pupils on roll at Mounton House Special School at the time of publishing this consultation document.

Admission into Mounton House Special School is determined via the Mounton House Admissions panel. Children and Young People that are to be considered for a place at the School will need to be in receipt of a statement of SEN. Admission is determined on the basis of individual need whilst accommodating parental preference, where possible. Therefore, it is not possible to predict admission numbers year on year. There are not any confirmed admissions for September 2019 over and above the numbers provided in the above table, however, this is subject to change as any application requests are received.

The following table show the projected numbers on roll at schools that could be affected by the proposals.

School	2019/20	2020/21	2021/22	2022/23	2023/24
Caldicot	1335	1348	1341	1343	1339
Chepstow	958	955	955	957	983
King Henry VIII	986	1009	1027	1046	1049
Monmouth	1589	1588	1584	1579	1580

9. Impact of proposals

The following section provides data on the quality and standards of education in the schools affected and the likely impact the proposals will have on the quality of Education.

9.1 Staff employed at affected school

There are currently 35 staff employed at Mounton House Special School. The Council is confident that there will be opportunities for redeployment for staff following the establishment of a new ALN delivery model as well as the proposed development of enhancement to the pupil referral service.

However, should the proposals proceed, we are unable to discount that there may be the need for compulsory redundancies. The Schools Protection of Employment Policy will be followed in all respects and, in line with that policy, Staff will be offered

the opportunity to express and interest for voluntary redundancy and these requests would be considered in the first instance and before any compulsory redundancies are made, should that be required.

Where there is a need for compulsory redundancies, the Council's protection of employment policy will be followed.

9.3 Quality and standards of education

The outcomes of the most recent Estyn Inspections and national categorisation for the schools affected by the proposals and the PRU are as follows:

Previous Inspection Framework 2010-2017

School	Inspection date	Outcomes	Provision	Leadership and management	Overall Performance	
					Performance	Prospects for improvement
Monmouth Comprehensive School and SNRB	November 2015	Adequate	Good	Good	Adequate	Good

In the latest national categorisation for schools across Wales, the EAS has placed Monmouth Comprehensive School in 'green' support category indicating the school requires the least amount of support to improve standards. The school was placed in 'yellow' support category in 2017/18 and therefore needs less support than previously required in 2018/19.

School	Inspection date	Outcomes	Provision	Leadership and management	Overall Performance	
					Performance	Prospects for improvement
King Henry VIII Secondary School	December 2014	Adequate	Adequate	Adequate	Adequate	Adequate

In the latest national categorisation for schools across Wales, the EAS has placed King Henry VIII Secondary School in the 'green' support category indicating that the school requires the least amount of support to improve standards further. The school was placed in 'yellow' support category in 2017/18 and therefore needs less support than previously required in 2018/19.

School	Inspection date	Outcomes	Provision	Leadership and management	Overall Performance	
					Performance	Prospects for improvement
Mounton House Special School	May 2015	Adequate	Adequate	Adequate	Adequate	Adequate

In the latest national categorisation for schools across Wales, the EAS has placed Mounton House Special School in 'Yellow' support category indicating that the

school requires a sustained amount of support to improve standards. The school was in 'red' support category two years ago and therefore it needs considerably less support than it did previously.

Current Inspection Framework 2017 onwards

School	Inspection Date	Standards	Wellbeing and attitudes to learning	Teaching and Learning Experiences	Care, support and guidance	Leadership and Management
Chepstow School	September 2017	Good	Adequate and needs improvement	Adequate and needs improvement	Adequate and needs improvement	Adequate and needs improvement

In the latest national categorisation for schools across Wales, The EAS has placed Chepstow School in 'amber' support category indicating that the school requires a sustained amount of support to improve standards. The school was in an 'amber' support category in the previous year.

School	Inspection Date	Standards	Wellbeing and attitudes to learning	Teaching and Learning Experiences	Care, support and guidance	Leadership and Management
Caldicot School	October 2018	Good	Adequate and needs improvement	Good	Adequate and needs improvement	Adequate and needs improvement

In the latest national categorisation for schools across Wales, The EAS has placed Caldicot School in 'amber' support category indicating that the school requires a sustained amount of support to improve standards. The school was in a 'yellow' support category in the previous year and therefore it now requires more support.

Estyn the Office of Her Majesty's Chief Inspector of Education and Training in Wales independently inspects quality and standards in education and training providers in Wales including the schools and settings within Monmouthshire.

Since September 2012, the LA has commissioned the Education Achievement Service (EAS) to provide our school improvement service to support and lead school improvement in all of our schools. As part of this proposal, the Council will continue to work in partnership with the EAS to secure a greater level of support for schools named within our proposal to ensure that the current level for standards, wellbeing and leadership are enhanced following the implementation of the proposal.

Academic outcomes for the last three years for the end of phase core indicator for the four primary schools and three secondary schools likely to be affected by the proposal are outlined below.

Secondary School Performance

Key Stage 3

Over the last 3 years, there has been an improvement in outcomes at the end of key stage 3 in three of the secondary schools potentially affected by the proposal and a decline in the fourth.

Secondary School	Key Stage 3 Core Subject Indicator								
	2016			2017			2018		
	School	LA Average	All Wales Average	School	LA Average	All Wales Average	School	LA Average	All Wales Average
Monmouth Comprehensive	93.6%	91.9%	85.9%	91.9%	92.7%	87.4%	95.3%	93.6%	88.1%
King Henry VIII School	92.5%	91.9%	85.9%	94.1%	92.7%	87.4%	93.3%	93.6%	88.1%
Caldicot School	93.3%	91.9%	85.9%	94.1%	92.7%	87.4%	93.8%	93.6%	88.1%
Chepstow School	93.8%	91.9%	85.9%	94.6%	92.7%	87.4%	90.9%	93.6%	88.1%

Key Stage 4 Level 2 Threshold including English and mathematics

Performance in the key stage 4 Level 2 Threshold including English and mathematics at the end of key stage 4 in 2018 declined in all four secondary schools potentially affected by the proposal.

Secondary School	Key Stage 4 Level 2 Threshold including English and mathematics								
	2016			2017			2018		
	School	LA Average	All Wales Average	School	LA Average	All Wales Average	School	LA Average	All Wales Average
Monmouth Comprehensive	69.7%	67.0%	60.3%	74.0%	67.0%	54.6%	69.4%	59.5%	55.1%
King Henry VIII School	71.2%	67.0%	60.3%	63.3%	67.0%	54.6%	63.7%	59.5%	55.1%
Caldicot School	69.7%	67.0%	60.3%	61.3%	67.0%	54.6%	47.7%	59.5%	55.1%
Chepstow School	62.5%	67.0%	60.3%	69.8%	67.0%	54.6%	66.4%	59.5%	55.1%

9.4 Welsh in Education Strategic Plan (WESP)

Although this proposal is not directly linked to our current WESP, we would endeavour to appoint suitably experienced Welsh speakers to the service to support our target to develop provision for learners with ALN through the medium of Welsh.

The proposal would not expand or reduce Welsh language provision within the county.

10. Finance

The allocation of funding to Mounton House Special School for the 2018/19 financial year was £1,559,952. The Council has received an agreed placement income from neighbouring local authorities of £756,832. This has resulted in actual costs of £803,120 to the Council, which equates to £114,731 per Monmouthshire pupils based on seven Monmouthshire children on roll.

Due to the continuation of falling numbers on roll, the Council has agreed to implement a cut of £275,000 to the funding awarded to Mounton House Special School for 2019/20. The expected funding to Mounton House Special School for 2019/20 will therefore be £1,284,952. The expected income to the Local Authority is £356,000 resulting in expected costs of £928,952 or £154,825 per Monmouthshire pupil.

11. Home to School Transport

Children and young people affected by these proposals will continue to receive free home to school transport to the provision identified to be most appropriate in meeting their identified needs.

12. Land and Buildings

The proposal does not involve a new build programme so there is no transfer or disposal of land necessary, therefore there will be no capital receipts as a result of this project.

13. Risks and counter measures

	Risk Description	Counter Measures
1	Employment risks to staff	The Council will look at all available opportunities for staff affected by the proposals to be redeployed into alternative posts. The protection of employment policy will be followed and extensive support available through the Council's HR services to support staff affected.
2	Education instability for pupils affected	If the proposal to close Mounton House Special School is approved following statutory consultation process, the Council

		will ensure that suitable alternative arrangements are in place to minimise disruption to the children and young people affected by these proposals.
3	There may not be places available for a small number of our children and young people	Develop robust service level agreements with other local authorities to secure ongoing need.
4	While statutory timelines for the proposed school closure can be met, the HR timeline carries some risk which may result in staff notice periods running beyond 31 st December 2019	This will bring financial pressures in year which is recognised. The protection of employment policy will be followed to ensure adequate notice periods are given to staff should the proposal be approved.

14. Other Information

Further Information and regular up-dates on this proposal can be found on www.monmouthshire.gov.uk/schoolreorganisation.

Frequently asked questions will be up-loaded weekly and put onto the Monmouthshire County Council Website.

Appendix 1 - Response Pro-forma

Proposal – Closure of Moun-ton House Special School

We would like your views on the above proposal. Please complete this pro-forma and return it to the address at the bottom, alternatively it can be handed in at the consultation meeting.

Do you agree with the above proposal?

Yes

No

Please provide a reason for you answer?

School & Student Access Unit, Monmouthshire County Council, PO Box 106, Caldicot, NP26 9AN or email strategicreview@monmouthshire.gov.uk

Please tick the box if you wish to be notified of the publication of the consultation report

Appendix 2 - List of Consultees

- Parents, Guardians and carers of all pupils at schools directly affected by the proposal
- Headteacher, staff and governors of schools directly affected by the proposal.
- Out of county Schools affected by the proposal.
- Pupils/Pupil Councils of schools directly affected by the proposal
- Headteachers of all schools in MCC area
- All MCC Members
- Welsh Ministers
- All MCC Town and Community Councils
- All MCC Assembly Members representing the area served by the school
- All Members of Parliament representing MCC area
- Directors of Education of all bordering LAs – Blaenau Gwent, Newport, Powys, Torfaen, Herefordshire, Gloucestershire
- Directors of Education of affected LA's – Caerphilly, South Gloucestershire, Merthyr, Bristol, Rhodda Cynon Taff, North Somerset, Somerset, Swindon, Vale of Glamorgan, Cardiff
- Principals of Coleg Gwent
- MCC Youth Service
- GAVO
- Monmouthshire Governors Association
- Teaching Associations
- Support Staff Associations
- Policy Officer (Equalities & Welsh Language)
- Welsh Government
- ESTYN
- Church in Wales Diocesan Trust, Director of Education
- Roman Catholic Diocesan Trust, Director of Education
- South East Wales Education Achievement Service
- Gwent Police and Crime Commissioner
- SNAP Cymru Parent Partnership Service
- Local Health Board



monmouthshire
sir fynwy

**Future Generations Evaluation
(includes Equalities and Sustainability Impact Assessments)**

Page 100
People

Name of the Officer Will McLean

Phone no: 01633 644582

E-mail: willmclean@monmouthshire.gov.uk

Name of Service Chief Officer for Children and Young People

Please give a brief description of the aims of the proposal
CONSULTATION ON THE PROPOSAL TO CLOSE MOUNTON HOUSE SPECIAL SCHOOL

Date Future Generations Evaluation 19th February 2019

NB. Key strategies and documents that may help you identify your contribution to the wellbeing goals and sustainable development principles include: Single Integrated Plan, Continuance Agreement, Improvement Plan, Local Development Plan, People Strategy, Asset Management Plan, Green Infrastructure SPG, Welsh Language Standards, etc



- 1. Does your proposal deliver any of the well-being goals below?** Please explain the impact (positive and negative) you expect, together with suggestions of how to mitigate negative impacts or better contribute to the goal.




Well Being Goal	Does the proposal contribute to this goal? Describe the positive and negative impacts.	What actions have been/will be taken to mitigate any negative impacts or better contribute to positive impacts?
<p>A prosperous Wales Efficient use of resources, skilled, educated people, generates wealth, provides jobs</p>	<p>The proposal is to close Mounton House Special School in Chepstow. This will impact on all staff and pupils at the school and possibly the local community. There will be loss of jobs, some may be volunteers, but there will also be compulsory redundancies. Pupils will be moved to other schools and some of these may be out of county to Monmouthshire.</p> <p>The cost per placement for Monmouthshire pupils in Mounton House is £114,731, comparable provisions charge between £40,000 - £70,000 per placement. If the proposal is accepted the resources released will enable a greater number of pupils to be supported. Next years costs are forecast to rise to £154,825.</p> <p>The resources released will allow the Council to use this funding to support a greater number of pupils with a wider range of needs.</p>	<p>All staff and pupils will have full consultation regarding these proposals. Where possible staff may be able to obtain alternative employment opportunities within Monmouthshire. If this is not the case all protection of employment policies will be followed with all staff being provided with support to obtain alternative employment.</p> <p>All pupils and parents will be consulted to seek their views on alternative placements. Not all the pupils in the school are residents of Monmouthshire County Council, where this is not the case, their home authorities will be provided with notice to consider alternative placements. Monmouthshire will work closely with these local authorities to ensure a smooth transition.</p>
<p>A resilient Wales Maintain and enhance biodiversity and ecosystems that support resilience and can adapt to change (e.g. climate change)</p>		
<p>A healthier Wales People's physical and mental wellbeing is maximized and health impacts are understood</p>	<p>With this proposal both pupils and staff will face a period of uncertainty until the consultation is concluded. Both will be support throughout and kept informed of progress.</p>	<p>It is recognised that this will be an uncertain time for both pupils and staff, and their wider families. Support will be provided through the process, this will include support from employee services officers and the education psychology service. Their views will be heard as part of the consultation and feed into the final proposals.</p>

Well Being Goal	Does the proposal contribute to this goal? Describe the positive and negative impacts.	What actions have been/will be taken to mitigate any negative impacts or better contribute to positive impacts?
<p>A Wales of cohesive communities Communities are attractive, viable, safe and well connected</p>	<p>While most of the pupils do not live near to the school, and the majority do not live within Monmouthshire. The proposal may allow some of those pupils who live in Monmouthshire to return to their own communities and be educated within their local community.</p>	<p>While the pupils do not live in the area in the majority of cases they do access the local community facilities while attending the school, however this is not frequent and therefore this will have a minimum impact. However some of the staff will use access local facilities during the working week. This will be a loss of an employer in Chepstow, however there are 35 employees at the school and therefore it is anticipated the impact on the local community will be minimal.</p>
<p>A globally responsible Wales Taking account of impact on global well-being when considering local social, economic and environmental wellbeing</p>		
<p>A Wales of vibrant culture and thriving Welsh language Culture, heritage and Welsh language are promoted and protected. People are encouraged to do sport, art and recreation</p>	<p>The school will promote Welsh heritage, culture and language, pupils that move to another Welsh school will continue to celebrate this. The school currently will have a number sporting / art opportunities for all pupils, this will also be offered in their new school.</p>	<p>Where pupils need to transfer to a school that is not within Wales they will not be offered the same Welsh opportunities, by consulting with the pupils and parents their views will be heard and accommodated wherever possible.</p>
<p>A more equal Wales People can fulfil their potential no matter what their background or circumstances</p>	<p>The Local Authority has a duty to monitor schools to ensure pupils reach their full potential, by releasing resources to enable training of school staff this will allow more pupils to be supported to ensure that they reach their full potential.</p>	<p>Pupils and parents will be consulted with to ensure that the future education provision can meet the needs of the pupil to allow them to meet their full potential. This maybe in another local provision or in some cases a specialist provision. Where pupils reside in other authorities, these authorities will be provided</p>

Well Being Goal	Does the proposal contribute to this goal? Describe the positive and negative impacts.	What actions have been/will be taken to mitigate any negative impacts or better contribute to positive impacts?
		with sufficient notice to allow them to place their pupils in schools that can meet needs.

2. How has your proposal embedded and prioritised the sustainable governance principles in its development?

Sustainable Development Principle	Does your proposal demonstrate you have met this principle? If yes, describe how. If not explain why.	Are there any additional actions to be taken to mitigate any negative impacts or better contribute to positive impacts?
 <p>Long Term</p> <p>Balancing short term need with long term and planning for the future</p>	<p>The cost to run Mouton House Special School are significant compared to the number of Monmouthshire pupils that need to access the provision. Resources need to be carefully balanced to ensure value for money. This proposal will allow resources to be directed to the where the need is but still meeting the needs of the pupils currently attending the school.</p>	<p>All staff effective will be consulted and supported through the process, the protection of employment policy will be followed.</p> <p>The will be clear consultation following all statutory guidance. The needs of pupils currently in our schools will be assessed as they progress through their education, adequate provision to meet the needs will be sort where appropriate when required.</p>
 <p>Collaboration</p> <p>Working together with other partners to deliver objectives</p>	<p>Given that there are a number of pupils that attend the school who do not live in Monmouthshire. There will be extensive work with the other authorities, pupils and parents to ensure that the best future provision for all pupils affected.</p>	<p>Clear consultation with all partners, following all statutory guidance to ensure all parties are able to contribute.</p>

Sustainable Development Principle	Does your proposal demonstrate you have met this principle? If yes, describe how. If not explain why.	Are there any additional actions to be taken to mitigate any negative impacts or better contribute to positive impacts?
 <p>Involvement</p> <p>Involving those with an interest and seeking their views</p>	<p>The consultation period will allow for all parties to contribute and to allow their views to be heard. These will feed into the final proposals, these consultees will include pupils, staff and parents along with a wide range of effected parties.</p>	
 <p>Prevention</p> <p>Putting resources into preventing problems occurring or getting worse</p>	<p>The current provision at the school is not meeting the needs of our pupils currently or in the current projections.</p> <p>The resources will be used to support a wider number of pupils with a wider range of need. Pupils attending the school will continue to have their needs met at an alternative suitable provision.</p>	
 <p>Integration</p> <p>Considering impact on all wellbeing goals together and on other bodies</p>	<p>The development of provision to support a wider range of needs for Monmouthshire pupils will allow resources to be directed to develop a sustainable provision. Which will be flexible to meet the needs of pupils going forward. This should allow pupils to be supported where possible in their local communities. Where pupils reside in other authorities, these authorities will be provided with sufficient notice to allow them to place their pupils in schools that can meet needs.</p>	

3. Are your proposals going to affect any people or groups of people with protected characteristics? Please explain the impact, the evidence you have used and any action you are taking below. For more detailed information on the protected characteristics, the Equality Act 2010 and the Welsh Language Standards that apply to Monmouthshire Council please follow this link:<http://hub/corporatedocs/Equalities/Forms/AllItems.aspx> or contact Alan Burkitt on 01633 644010 or alanburkitt@monmouthshire.gov.uk

Protected Characteristics	Describe any positive impacts your proposal has on the protected characteristic	Describe any negative impacts your proposal has on the protected characteristic	What has been/will be done to mitigate any negative impacts or better contribute to positive impacts?
----------------------------------	--	--	--

Age	<p>At January 19 PLACS there are 21 pupils in Mounton House, or these 2 are residential and this includes 7 that reside in Monmouthshire. None of the Monmouthshire pupils are residential. The split of pupils are:</p> <ul style="list-style-type: none"> Year 7 2 pupils Year 8 1 pupil Year 9 4 pupils Year 10 5 pupils Year 11 9 pupils <p>The year 11 pupils will leave the school at the end of August 2019. The current forecast is that there will be 14 pupils in September 2019 with 6 residing in Monmouthshire.</p> <p>In some cases it may be possible for pupils to return to provisions that are closer to their local communities, this will allow pupils to be educated with their peers and community.</p> <p>The current forecast cost per Monmouthshire pupil is and this will rise to £154,025 in September 2019.</p> <p>The placement costs for 2018-19 are for day pupils £42,304 and for residential £71,739. Given that the full costs are not being recovered there is a subsidy to other local authorities of £72,067 day pupils and £42,632.</p> <p>There are 35 staff in the school as part of the protection of employment policy of includes options for voluntary redundancies.</p>	<p>The school is for boys aged between 11 – 16. This proposal will see the school closed and provision for these pupils met elsewhere,.</p> <p>There are 35 staff in the school should the proposal go ahead there will be a need for compulsory redundancies.</p>	<p>All pupils and their families will be consulted to ensure that their education can be continued in a suitable alternative provision which can meet their needs.</p> <p>In the case of compulsory redundancies the protection of employment policy will be followed and staff will be supported through the process.</p> <p>Discussions have started around the ring fencing of any future suitable jobs, while no decision has been made these discussions will continue to achieve the best outcome.</p> <p>Not all the pupils in the school are residents of Monmouthshire County Council, where this is not the case, their home authorities will be provided with notice to consider alternative placements. Monmouthshire will work closely with these local authorities to ensure a smooth transition.</p>
-----	---	--	---

Protected Characteristics	Describe any positive impacts your proposal has on the protected characteristic	Describe any negative impacts your proposal has on the protected characteristic	What has been/will be done to mitigate any negative impacts or better contribute to positive impacts?
Disability	<p>The Local Authority has a duty to monitor schools to ensure pupils reach their full potential, by releasing resources to enable training of school staff this will allow more pupils to be supported to ensure that they reach their full potential.</p> <p>In some cases it may be possible for pupils to return to provisions that are closer to their local communities, this will allow pupils to be educated with their peers and community.</p>	All the pupils attending the school will have a statement of special educational need. With this proposal the school will be closed.	<p>The support for these pupils will be consulted on with the pupils and their families. Their views will be considered to ensure that their views are accommodated where ever possible.</p> <p>Not all the pupils in the school are residents of Monmouthshire County Council, where this is not the case, their home authorities will be provided with ample notice to consider alternative placements. Monmouthshire will work closely with these local authorities to ensure a smooth transition.</p> <p>Pupils in year 11 who will be undertaking exams we will consider maintaining provision to allow them to continue at the school to complete their statutory education.</p>
Gender reassignment			
Marriage or civil partnership			
Pregnancy or maternity			

Protected Characteristics	Describe any positive impacts your proposal has on the protected characteristic	Describe any negative impacts your proposal has on the protected characteristic	What has been/will be done to mitigate any negative impacts or better contribute to positive impacts?
Race	Full consideration on any future placement will take into account this protected characteristic. This will be done in consultation with pupils and parents.		
Religion or Belief	We are not aware of any pupils attending the school with this protected characteristic, however when considering alternative provision full consideration will be given to this.		
Sex	Mounton House Special school has a designation for boys only aged between 11 – 16 with a diagnosis of social emotional behaviour difficulties. By closing the school this will release funding to be used by the Children and Young People directorate to support a greater number of pupils. The pupils attending the school will be supported in an alternative provision suitable to meet their needs.		
Sexual Orientation			
Welsh Language		The school promotes Welsh language with the closure of the school some pupils will be required to attend English Schools where this is not possible.	All pupils' views will be heard and where possible Monmouthshire Pupils will be accommodated within Monmouthshire / Welsh school therefore this will allow the Welsh language to still be taught.

- 4. Council has agreed the need to consider the impact its decisions has on important responsibilities of Corporate Parenting and safeguarding. Are your proposals going to affect either of these responsibilities?** For more information please see the guidance <http://hub/corporatedocs/Democratic%20Services/Safeguarding%20Guidance.docx> and for more on

Monmouthshire's Corporate Parenting Strategy see

<http://hub/corporatedocs/SitePages/Corporate%20Parenting%20Strategy.aspx>

	Describe any positive impacts your proposal has on safeguarding and corporate parenting	Describe any negative impacts your proposal has on safeguarding and corporate parenting	What will you do/ have you done to mitigate any negative impacts or better contribute to positive impacts?
Safeguarding	The local authority will ensure that any new provision will be suitable to meet all the needs including safeguarding of the pupils.		
Corporate Parenting	The local authority will ensure that any new provision will be suitable to meet all the needs of all pupils placed there including any pupils for which they are the corporate parent.		

Page 110

5. What evidence and data has informed the development of your proposal?

At present there are 21 pupils in Mounton House, or these 2 are residential and this includes 7 that reside in Monmouthshire. None of the Monmouthshire pupils are residential. The year 11 pupils will leave the school at the end of August 2019. The current forecast is that there will be 14 pupils in September 2019 with 6 residing in Monmouthshire.

The current cost per Monmouthshire pupil is £114,731 and this is forecast to rise to £154,825 in September 2019. As a result of not recovering the full costs other local authorities that are placing pupils in Mounton House are being subsidised by £72,067 for day placements and £42,632 for residential placements.

The latest building survey shows that the building improvements that need to be made will be in excess of £6m.

All the above has led to the conclusion to consult on the proposal to close Mounton House Special School and to use the resources released to support a wider number of pupils with a wide range of need.

6. SUMMARY: As a result of completing this form, what are the main positive and negative impacts of your proposal, how have they informed/changed the development of the proposal so far and what will you be doing in future?

The negative impact will be fully felt by the pupils / families and staff who either attend or are employed at Mounton House Special School.

Early notification and consultation in conjunction with looking at alternative placements needs to be done as a matter of course as a mitigation to the negative impact felt by the pupils/parents.

Also looking at potential voluntary redundancy by natural wastage and the possible “ring fencing” of vacancies for affected staff may offer a reasonable level of mitigation to some but it is recognised that this will be a difficult process.

The above needs to be balanced alongside the significant financial resources currently required to maintain the school and the even greater resource required to run the school from September 2019. It is anticipated that this financial resource can provide an alternative provision for Monmouthshire pupils if that resource is released and it will have the added benefit of CYP Directorate being able to support a larger number of pupils with a wider range of specific needs.

Having carefully considered all of the impacts (both negative and positive) it is felt that the needs of the pupils can be accommodated by seeking alternative provision either by enhancing the current provision or seeking placements at alternative schools that can meet the pupils needs.

7. ACTIONS: As a result of completing this form are there any further actions you will be undertaking? Please detail them below, if applicable.

What are you going to do	When are you going to do it?	Who is responsible	Progress
Cabinet – recommending consultation on the closure of Mounton House.	6 th March 2019	Will McLean	
Consultation with staff pupils and parents.	28th March 2019	Will McLean	
Meetings with Unions and Human Resources.	28th March 2019	Will McLean	
Discussions with placement counties.	On-going – starting when consultation period opens	ALN team with DMT	

8. **MONITORING:** The impacts of this proposal will need to be monitored and reviewed. Please specify the date at which you will evaluate the impact, and where you will report the results of the review.

The impacts of this proposal will be evaluated on:	April 2021
---	------------

9. **VERSION CONTROL:** The Future Generations Evaluation should be used at the earliest stages of decision making, and then honed and refined throughout the decision making process. It is important to keep a record of this process so that we can demonstrate how we have considered and built in sustainable development wherever possible.

Version No.	Decision making stage	Date considered	Brief description of any amendments made following consideration
1.0	Cabinet	6 th March 2019	

This page is intentionally left blank